

*Population based on 2020 Decennial Block Group Census Data.
 All values are approximate.
<https://www.census.gov/geographies/mapping-files.html>
<https://data.census.gov/tables>

North Park - Population Per Census Block

<p>Population</p> <ul style="list-style-type: none"> 630 - 997 997 - 1,348 1,348 - 1,887 1,887 - 2,900 2,900 - 3,903 	<ul style="list-style-type: none"> Interstate Ramp US or State Route Arterial Collector Street Undeveloped Proposed Rims Pipe Canal or Ditch Creek or Slough Drain River Airport Railroad City /County Boundary
---------------------------------------------------------------------------------------------------------------------------------------------------------------------------------------------------------------------------------------------------------------------------------------------------------------------------------------------------------------------------------------------------------------------------------------------------------------------------------------------------------------------------------------------------------------------------------------------------------------------------------------------------------------------------------------------------------------------------------------------------------------------------------------------------------------------------------------------------------------------------------------------------------------------------	---------------------------------------------------------------------------------------------------------------------------------------------------------------------------------------------------------------------------------------------------------------------------------------------------------------------------------------------------------------------------------------------------------------------------------------------------------------------------------------------------------------------------------------------------------------------------------------------------------------------------------------------------------------------------------------------------------------------------------------------------------------------------------------------------------------------------------------------------------------------------------------------------------------------------------------------------------------------------------------------------------------------------------------------------------------------------------------------------------------------------------------------------------------------------------------------------------------------------------------------------------------------------------------------------------------------------------------------------------------------------------------------------------------------------------------------------------------------------------------------------------------------------------------------------------------------------------------------------------------------------------------------------------------------------------------------------------------------------------------------------------------------------------------------------------------------------------------------------------------------------------------------------------------------------------------------------------------------------------------------------------------------------------------------------------------------------------------------------------------------------------------------------------------------------------------------------------------------------------------------------------------------------------------------------------------------------------------------------------------------------------------------------------------------------------------------------------------------------------------------------------------------------------------------------------------------------------------------------------------------------------------

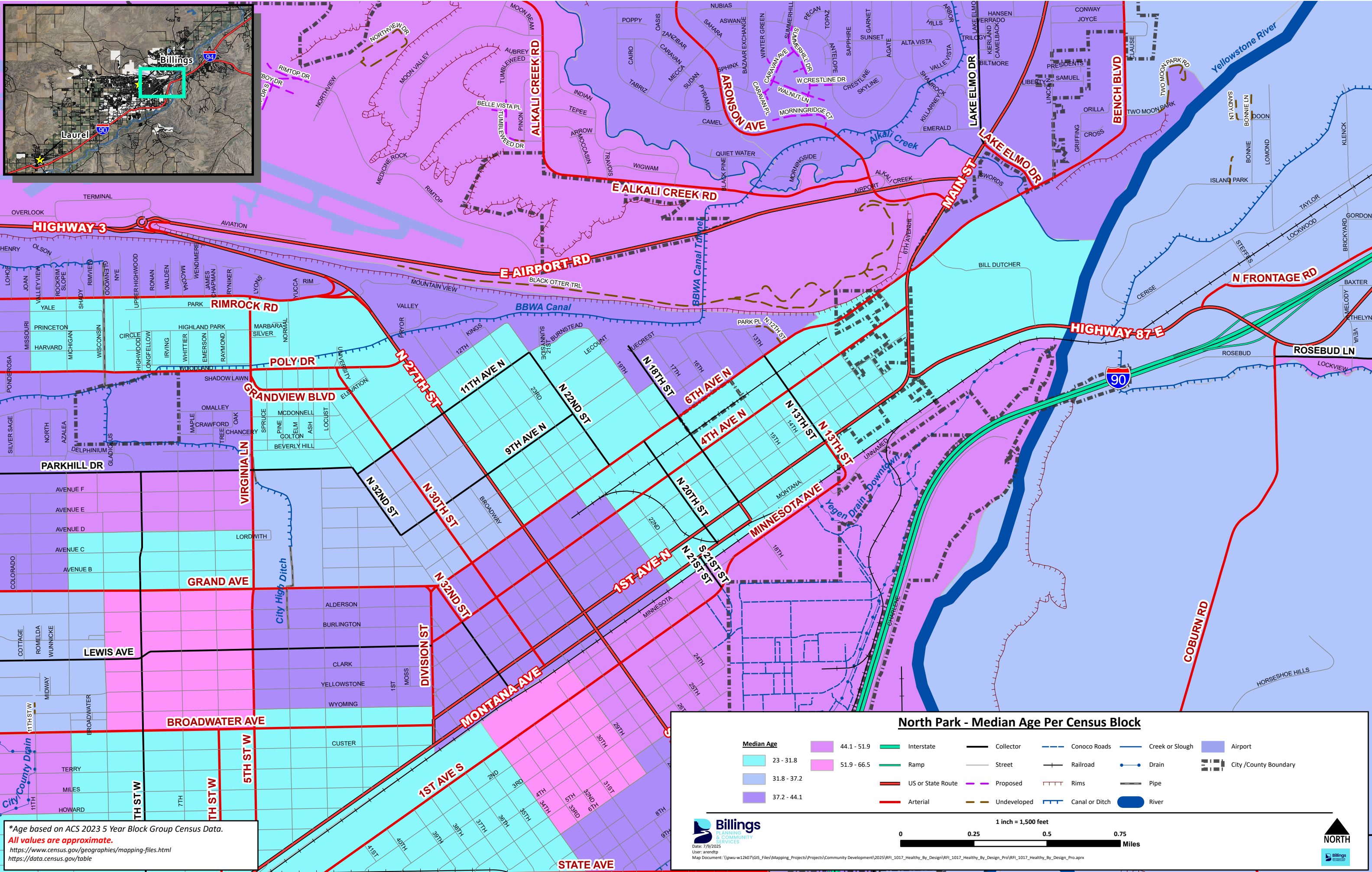
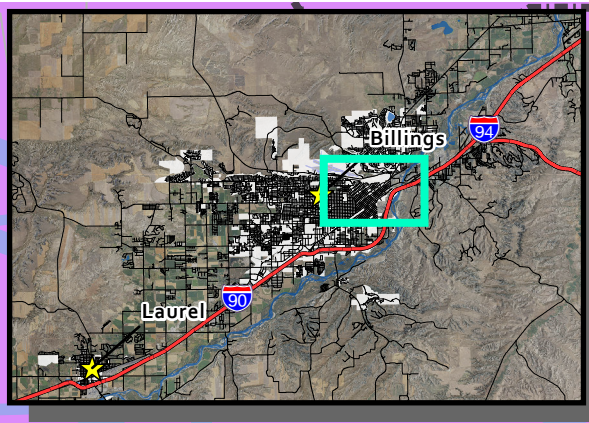
Billings
PLANNING & COMMUNITY SERVICES

Date: 7/9/2025
User: arendtp
Map Document: \\pww-w12407\GIS\Files\Mapping_Projects\Projects\Community_Development\2025\RFI_101_Healthy_By_Design\RFI_101_Healthy_By_Design_Pro\RFI_101_Healthy_By_Design_Pro.aprx

1 inch = 1,500 feet

0 0.25 0.5 0.75 Miles

NORTH



*Age based on ACS 2023 5 Year Block Group Census Data.
 All values are approximate.
<https://www.census.gov/geographies/mapping-files.html>
<https://data.census.gov/table>

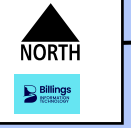
North Park - Median Age Per Census Block

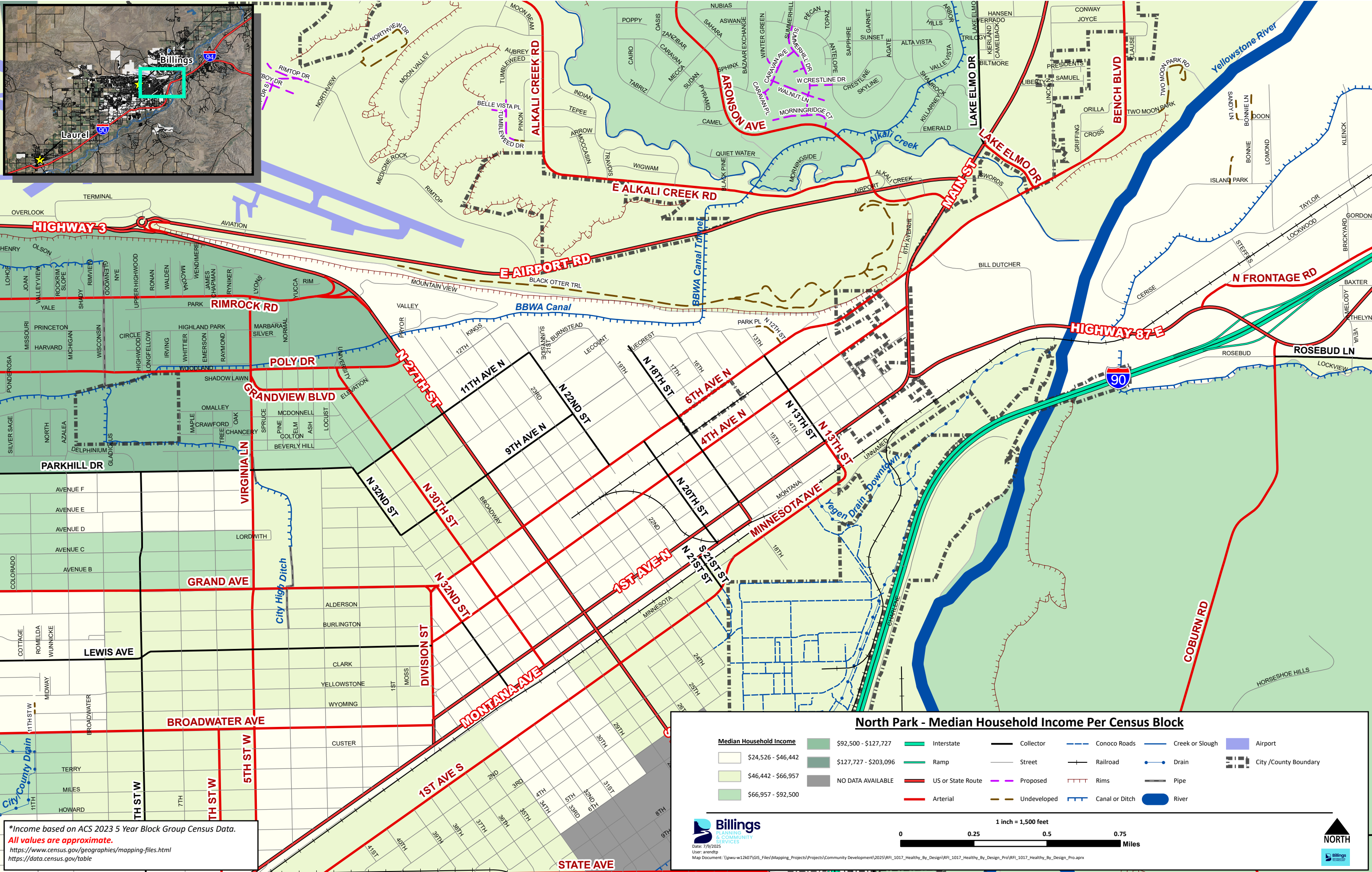
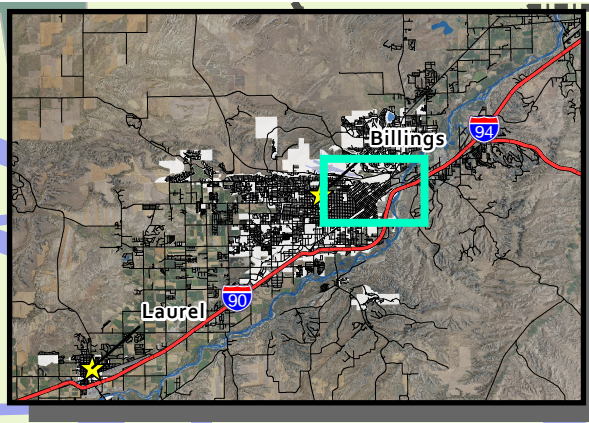
Median Age	Interstate	Collector	Conoco Roads	Creek or Slough	Airport
23 - 31.8	Ramp <td>Street <td>Railroad <td>Drain <td>City /County Boundary</td> </td></td></td>	Street <td>Railroad <td>Drain <td>City /County Boundary</td> </td></td>	Railroad <td>Drain <td>City /County Boundary</td> </td>	Drain <td>City /County Boundary</td>	City /County Boundary
31.8 - 37.2	US or State Route	Proposed	Rims <td>Pipe <td></td> </td>	Pipe <td></td>	
37.2 - 44.1	Arterial	Undeveloped	Canal or Ditch	River <td></td>	

1 inch = 1,500 feet

0 0.25 0.5 0.75 Miles

Billings
 PLANNING & COMMUNITY SERVICES
 Date: 7/9/2025
 User: arendtp
 Map Document: \\pww-w12407\GIS_Files\Maping_Projects\Projects\Community_Development\2025\RFI_1017_Healthy_By_Design\RFI_1017_Healthy_By_Design_Pro\RFI_1017_Healthy_By_Design_Pro.aprx





*Income based on ACS 2023 5 Year Block Group Census Data.
 All values are approximate.
<https://www.census.gov/geographies/mapping-files.html>
<https://data.census.gov/table>

North Park - Median Household Income Per Census Block

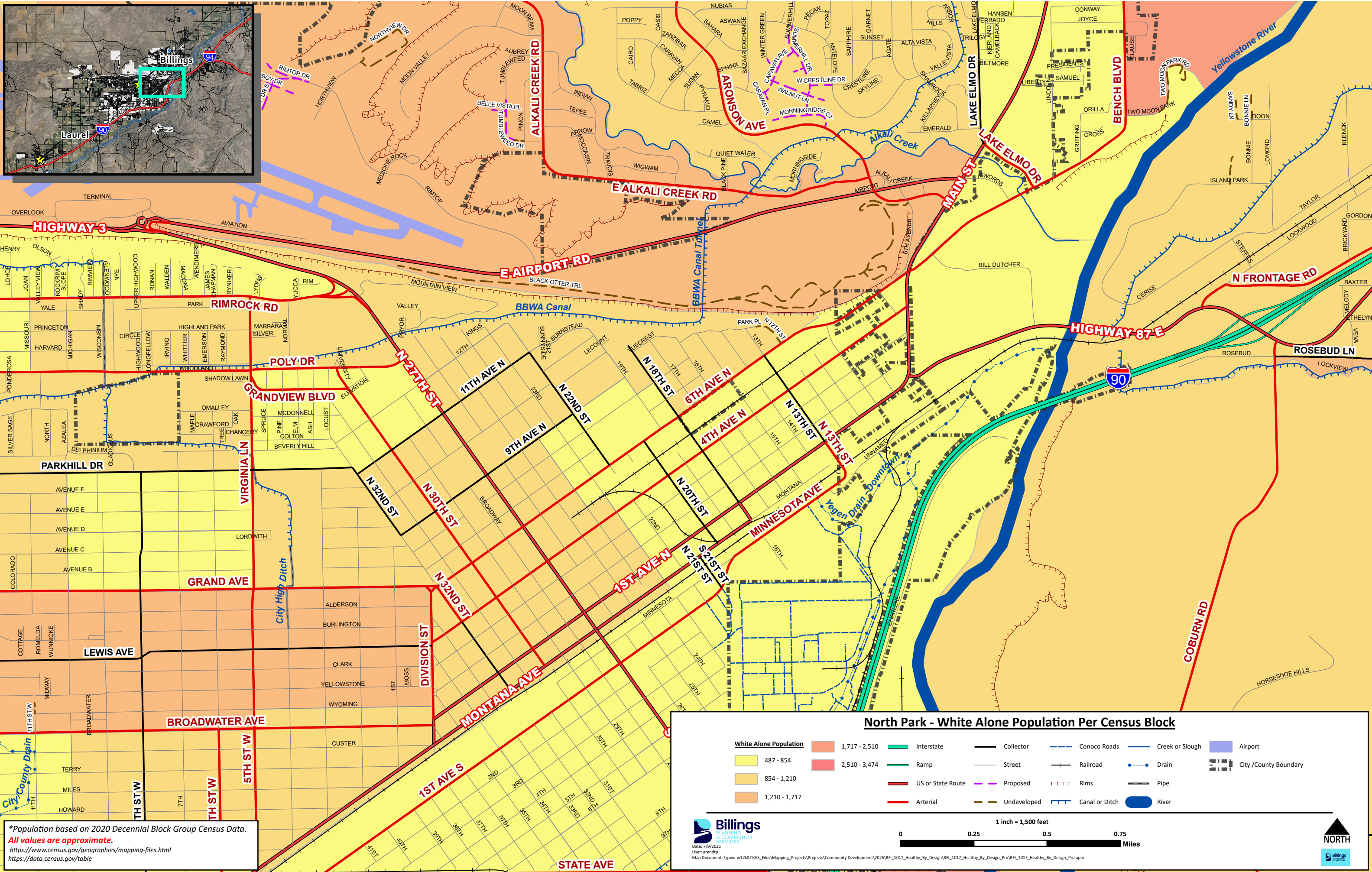
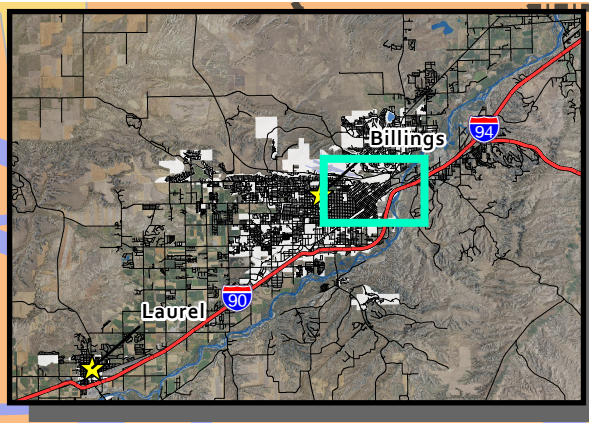
Median Household Income	\$92,500 - \$127,727	Interstate	Collector	Conoco Roads	Creek or Slough	Airport
\$24,526 - \$46,442	\$127,727 - \$203,096	Ramp	Street	Railroad	Drain	City / County Boundary
\$46,442 - \$66,957	NO DATA AVAILABLE	US or State Route	Proposed	Rims	Pipe	
\$66,957 - \$92,500		Arterial	Undeveloped	Canal or Ditch	River	

Date: 7/9/2025
 User: arendtp
 Map Document: \\pww-w12407\GIS_Files\Maping_Projects\Projects\Community_Development\2025\RFI_1017_Healthy_By_Design\RFI_1017_Healthy_By_Design_Pro\RFI_1017_Healthy_By_Design_Pro.aprx

1 inch = 1,500 feet

Miles

NORTH



*Population based on 2020 Decennial Block Group Census Data.
 All values are approximate.
<https://www.census.gov/geographies/mapping-files.html>
<https://data.census.gov/tables>

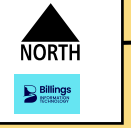
North Park - White Alone Population Per Census Block

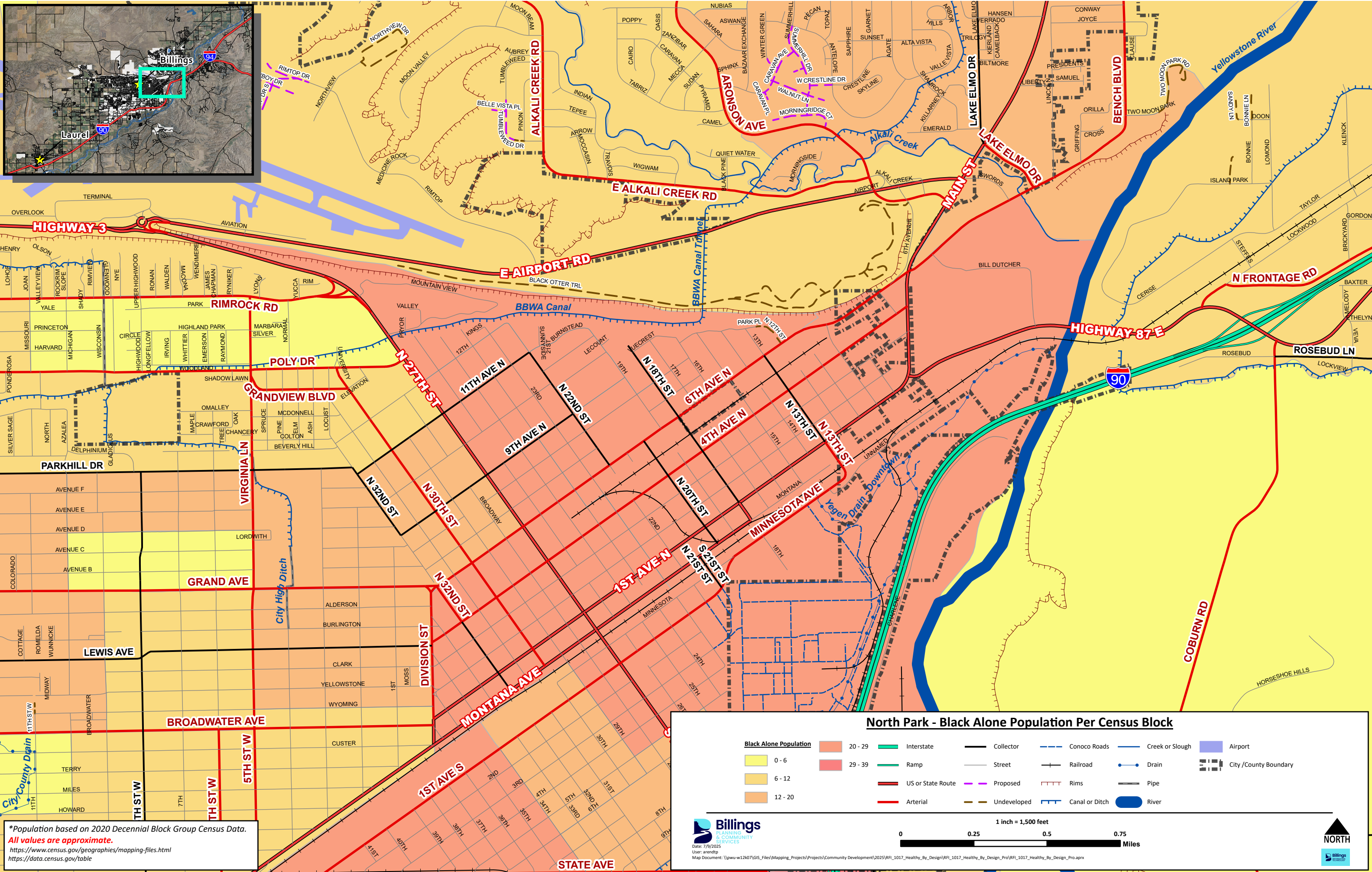
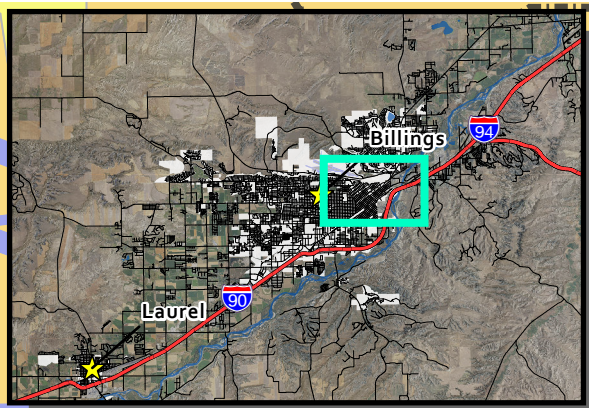
White Alone Population	1,717 - 2,510	Interstate	Collector	Conoco Roads	Creek or Slough	Airport
487 - 854	2,510 - 3,474	Ramp	Street	Railroad	Drain	City /County Boundary
854 - 1,210		US or State Route	Proposed	Rims	Pipe	
1,210 - 1,717		Arterial	Undeveloped	Canal or Ditch	River	

1 inch = 1,500 feet

0 0.25 0.5 0.75 Miles

Billings
 PLANNING & COMMUNITY SERVICES
 Date: 7/9/2025
 User: arendtp
 Map Document: \\pww-w12407\GIS_Files\Maping_Projects\Projects\Community_Development\2025\RFI_1017_Healthy_By_Design\RFI_1017_Healthy_By_Design_Pro\RFI_1017_Healthy_By_Design_Pro.aprx





*Population based on 2020 Decennial Block Group Census Data.
 All values are approximate.
<https://www.census.gov/geographies/mapping-files.html>
<https://data.census.gov/table>

North Park - Black Alone Population Per Census Block

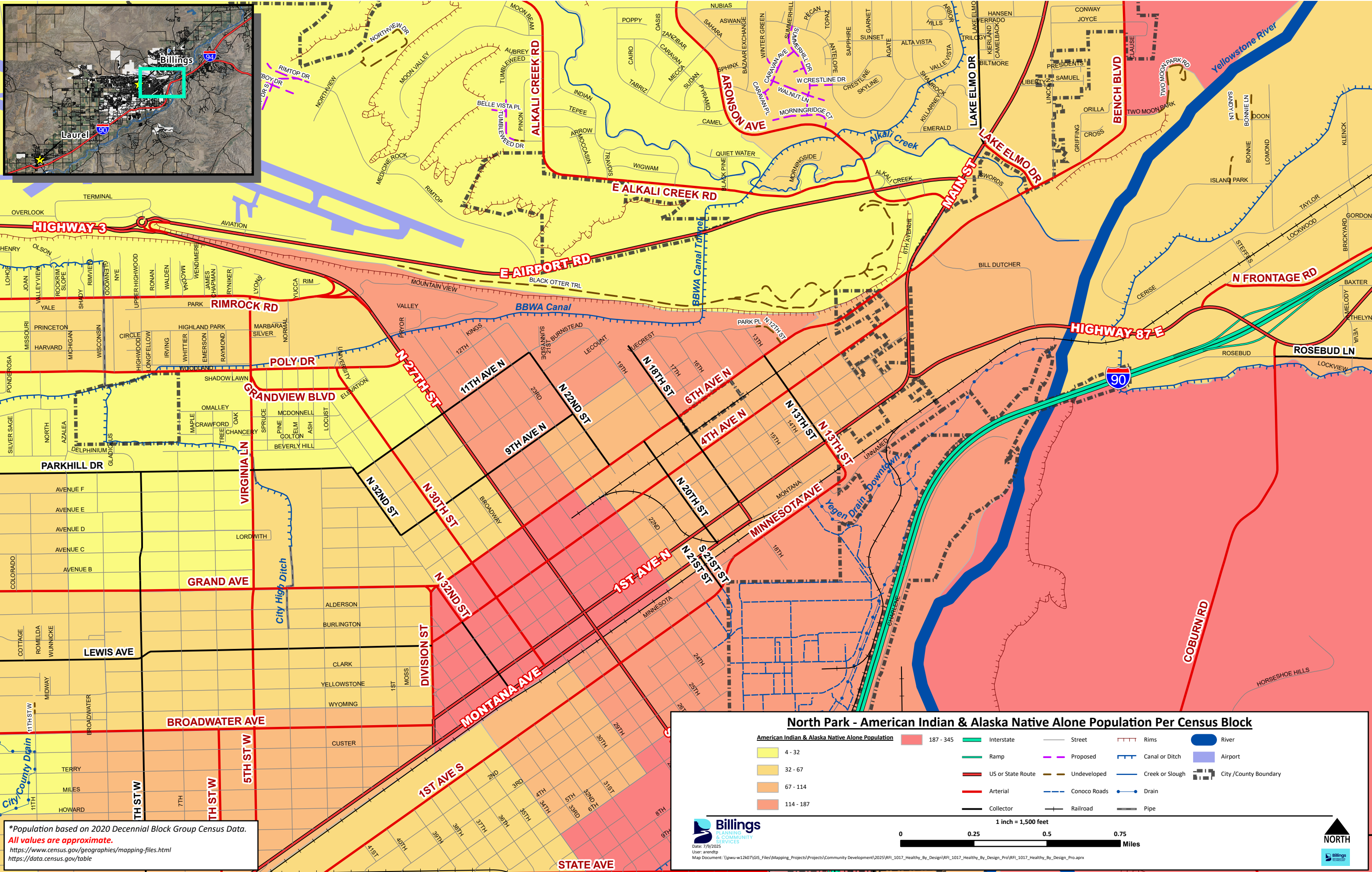
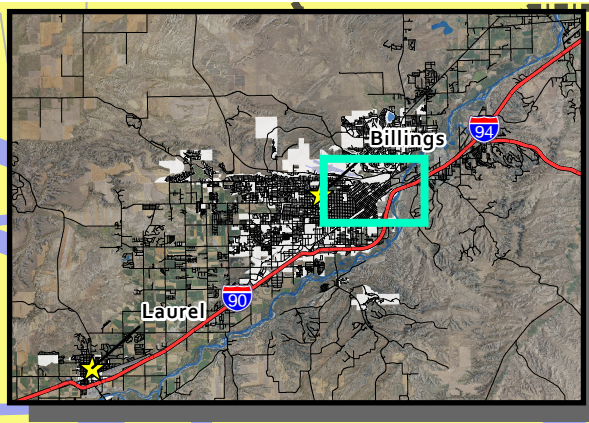
Black Alone Population	0 - 6	6 - 12	12 - 20	20 - 29	29 - 39
-------------------------------	-------	--------	---------	---------	---------

Interstate	Ramp	US or State Route	Arterial	Collector	Street	Proposed	Undeveloped	Conoco Roads	Railroad	Canal or Ditch	Creek or Slough	Drain	Pipe	River	Airport	City/County Boundary
------------	------	-------------------	----------	-----------	--------	----------	-------------	--------------	----------	----------------	-----------------	-------	------	-------	---------	----------------------

1 inch = 1,500 feet

0 0.25 0.5 0.75 Miles

Billings PLANNING & COMMUNITY SERVICES
 Date: 7/9/2025
 User: arendtp
 Map Document: \\pww-w12d07\GIS_Files\Maping_Projects\Projects\Community_Development\2025\RFI_101_Healthy_By_Design\RFI_101_Healthy_By_Design_Pro\RFI_101_Healthy_By_Design_Pro.aprx



*Population based on 2020 Decennial Block Group Census Data.
 All values are approximate.
<https://www.census.gov/geographies/mapping-files.html>
<https://data.census.gov/table>

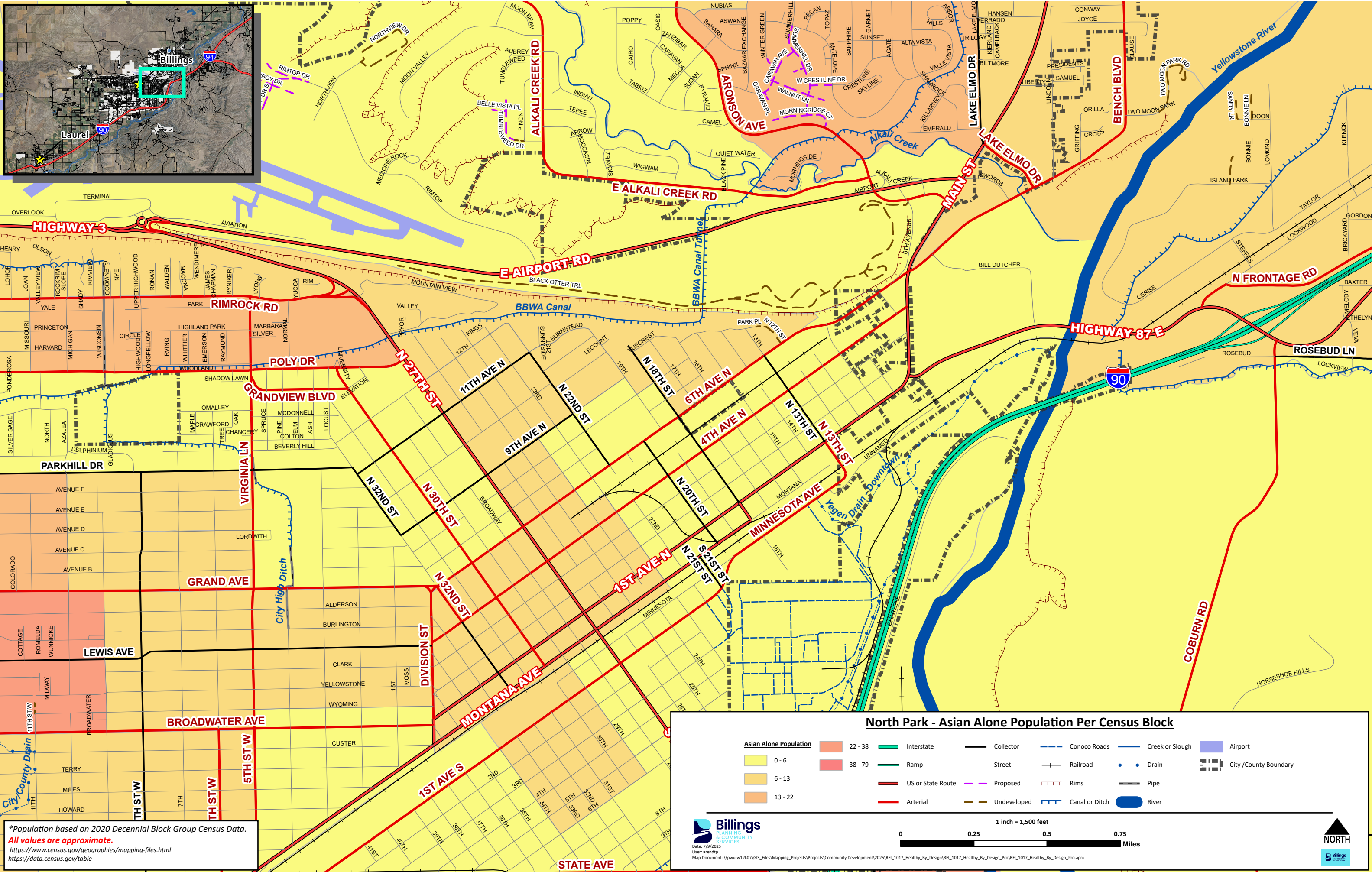
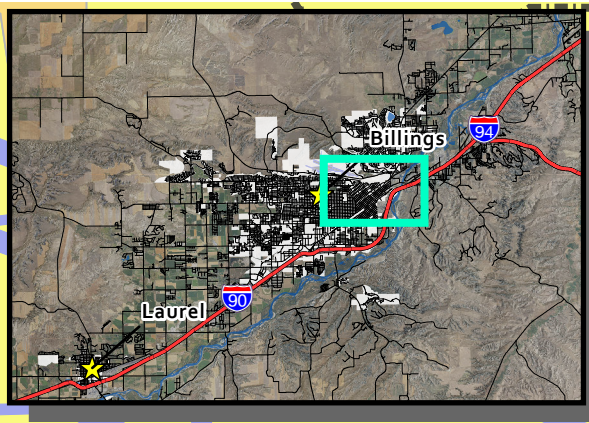
North Park - American Indian & Alaska Native Alone Population Per Census Block

American Indian & Alaska Native Alone Population	 187 - 345	 Interstate	 Street	 Rims	 River
 4 - 32	 32 - 67	 Ramp	 Proposed	 Canal or Ditch	 Airport
 67 - 114	 114 - 187	 US or State Route	 Undeveloped	 Creek or Slough	 City /County Boundary
		 Arterial	 Conoco Roads	 Drain	 Pipe
		 Collector	 Railroad		

1 inch = 1,500 feet

0 0.25 0.5 0.75 Miles

Billings
 PLANNING & COMMUNITY SERVICES
 Date: 7/9/2025
 User: arendtp
 Map Document: \\pww-w12d7\GIS_Files\Maping_Projects\Projects\Community_Development\2025\RFI_1017_Healthy_By_Design\RFI_1017_Healthy_By_Design_Pro\RFI_1017_Healthy_By_Design_Pro.aprx



*Population based on 2020 Decennial Block Group Census Data.
 All values are approximate.
<https://www.census.gov/geographies/mapping-files.html>
<https://data.census.gov/tables>

North Park - Asian Alone Population Per Census Block

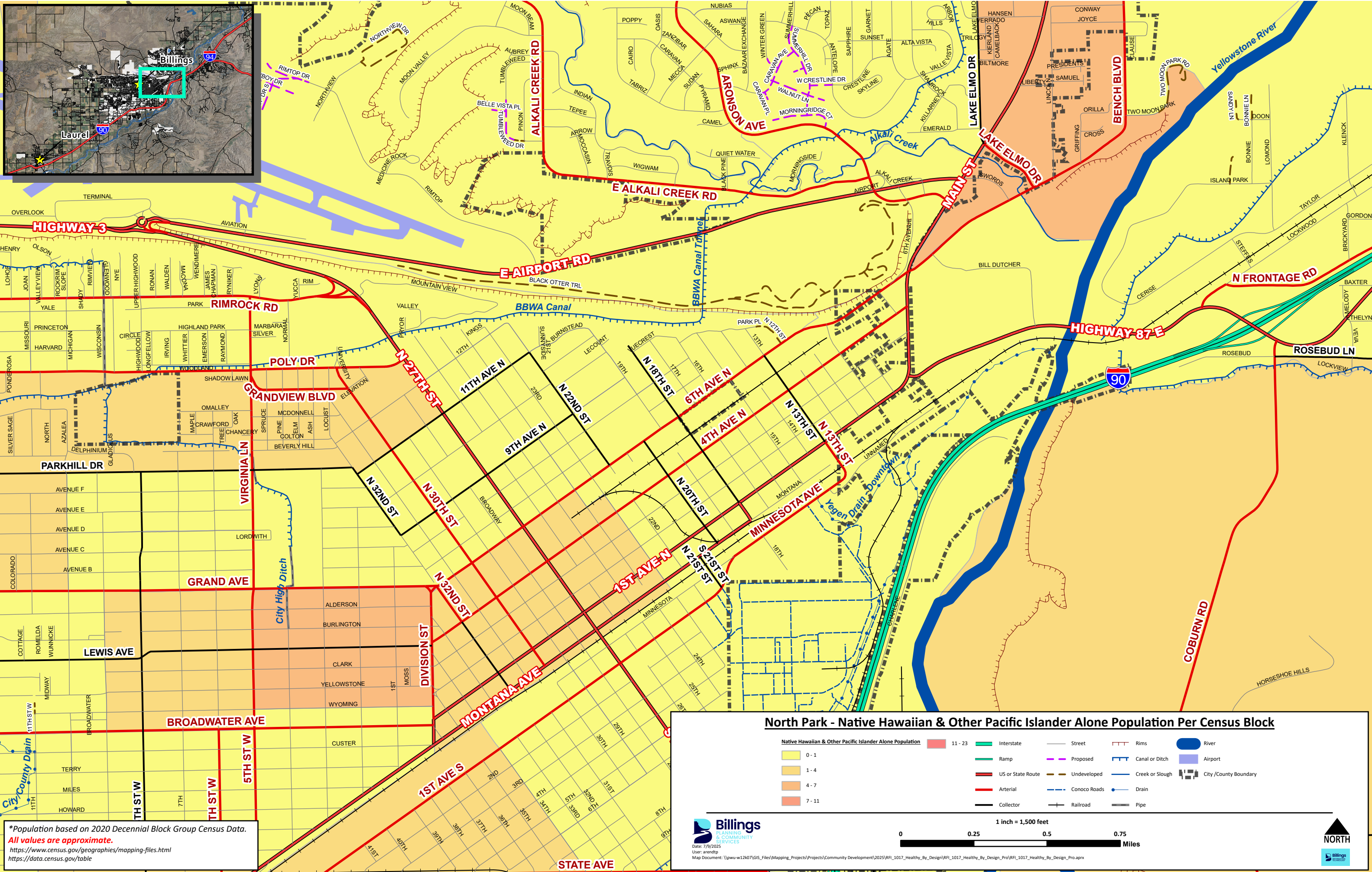
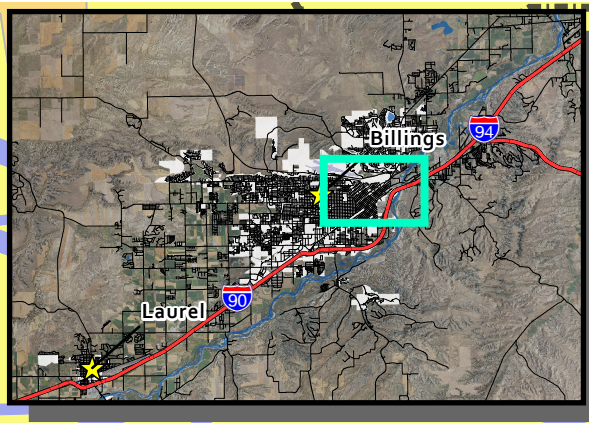
Asian Alone Population		Roads		Water Features		Other	
0 - 6	38 - 79	Interstate	Collector	Creek or Slough	Airport	Conoco Roads	City / County Boundary
6 - 13		Ramp	Street	Drain		Railroad	
13 - 22		US or State Route	Proposed	Canal or Ditch		Rims	
		Arterial	Undeveloped	River		Pipe	

1 inch = 1,500 feet

0 0.25 0.5 0.75 Miles

NORTH

Billings PLANNING & COMMUNITY SERVICES
 Date: 7/9/2025
 User: arendtp
 Map Document: \\pww-w12407\GIS_Files\Maping_Projects\Projects\Community_Development\2025\RFI_1017_Healthy_By_Design\RFI_1017_Healthy_By_Design_Pro\RFI_1017_Healthy_By_Design_Pro.aprx



*Population based on 2020 Decennial Block Group Census Data.
 All values are approximate.
<https://www.census.gov/geographies/mapping-files.html>
<https://data.census.gov/tables>

North Park - Native Hawaiian & Other Pacific Islander Alone Population Per Census Block

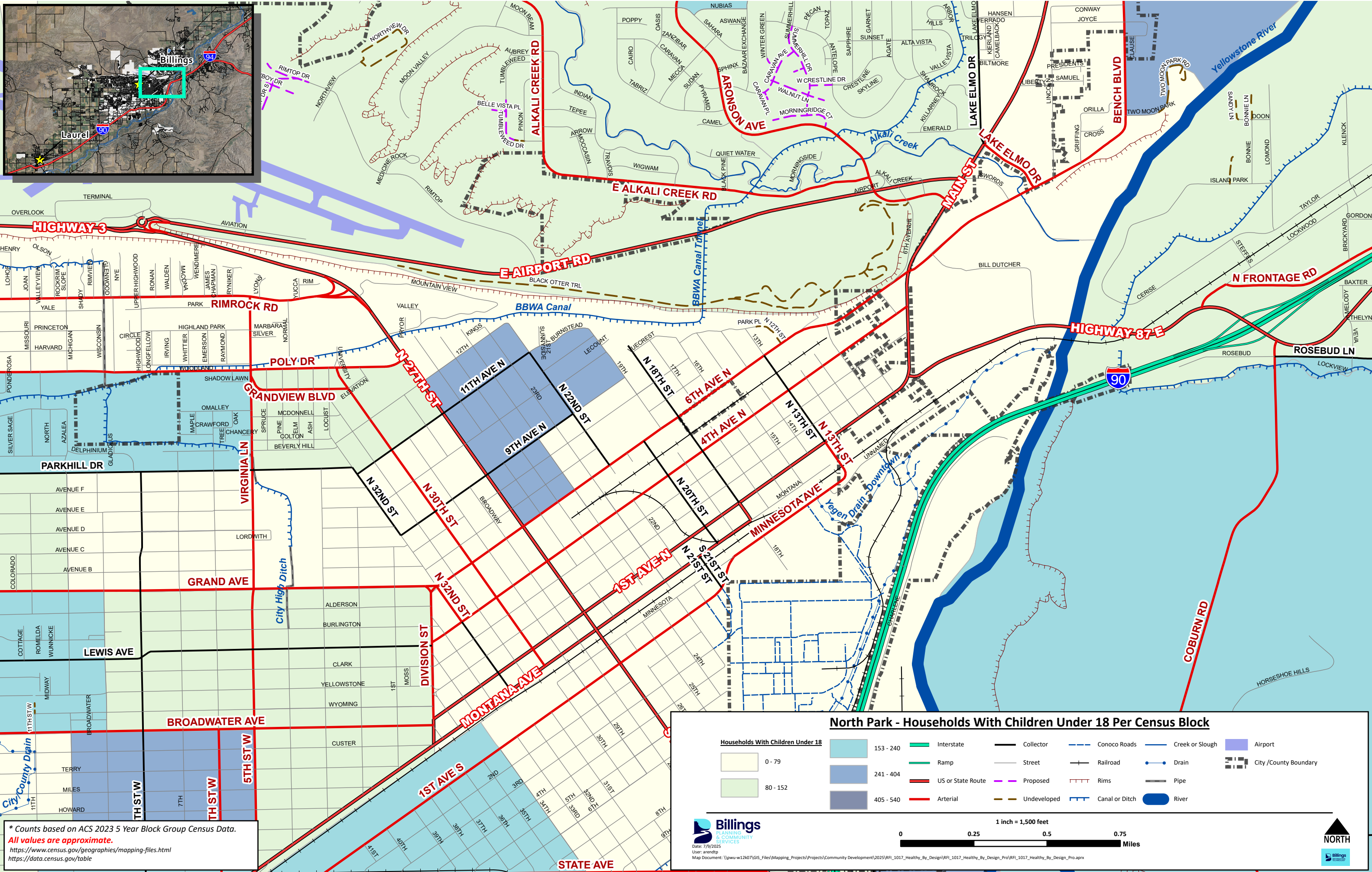
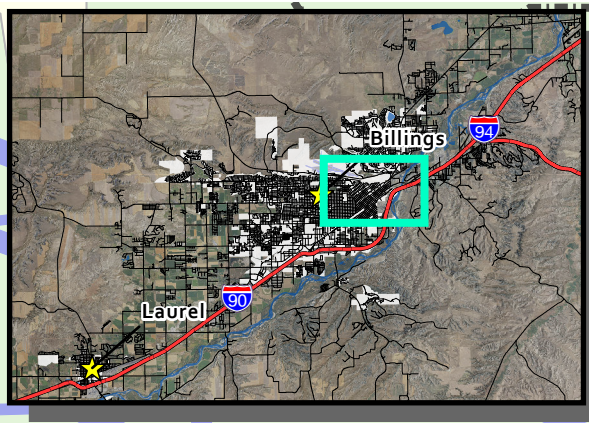
Native Hawaiian & Other Pacific Islander Alone Population		Other Features	
0 - 1	11 - 23	Interstate	Rivers
1 - 4	24 - 37	Ramp	Canal or Ditch
4 - 7	38 - 51	US or State Route	Creek or Slough
7 - 11	52 - 65	Proposed	Drain
	66 - 79	Undeveloped	Airport
	80 - 93	Conoco Roads	City/County Boundary
	94 - 107	Railroad	Pipe

Date: 7/9/2025
 User: arendip
 Map Document: \\pww-w12407\GIS_Files\Maping_Projects\Projects\Community_Development\2025\RFI_1017_Healthy_By_Design\RFI_1017_Healthy_By_Design_Pro\RFI_1017_Healthy_By_Design_Pro.aprx

1 inch = 1,500 feet

0 0.25 0.5 0.75 Miles

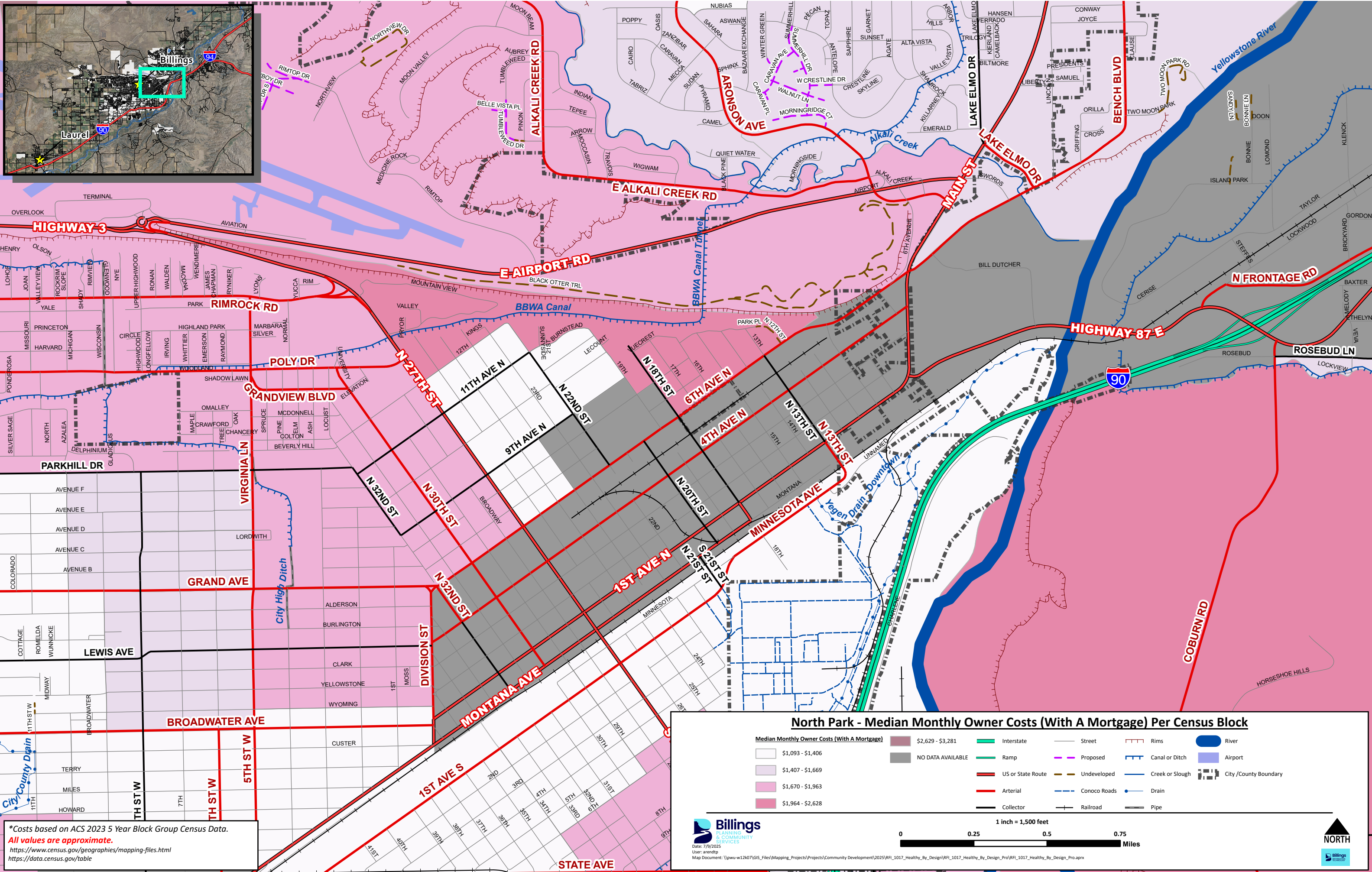
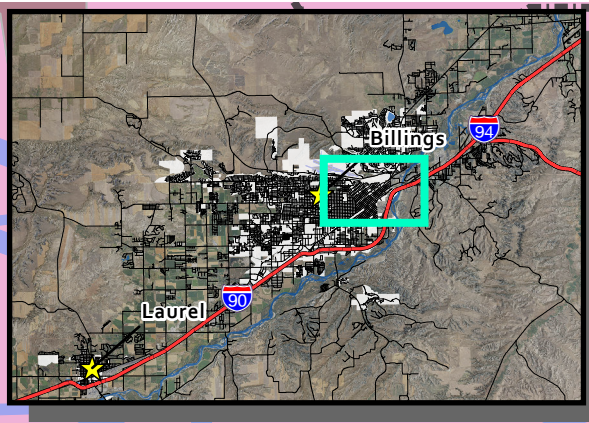
NORTH



North Park - Households With Children Under 18 Per Census Block

Households With Children Under 18		Interstate		Collector		Conoco Roads		Creek or Slough		Airport	
0 - 79	153 - 240	Ramp	Street	Railroad	Canal or Ditch	Pipe	City / County Boundary				
80 - 152	241 - 404	US or State Route	Proposed	Rims							
	405 - 540	Arterial	Undeveloped	Canal or Ditch							

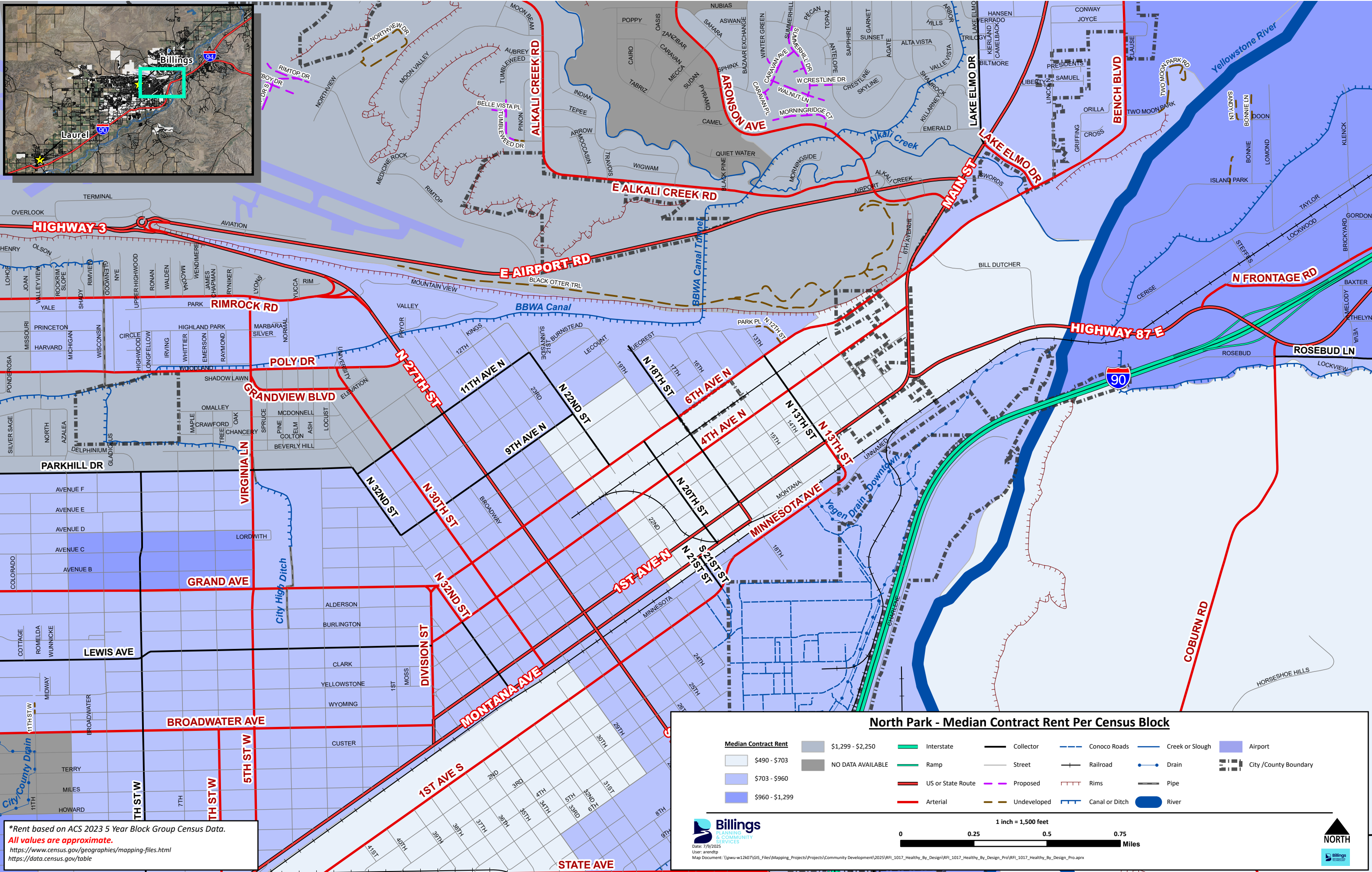
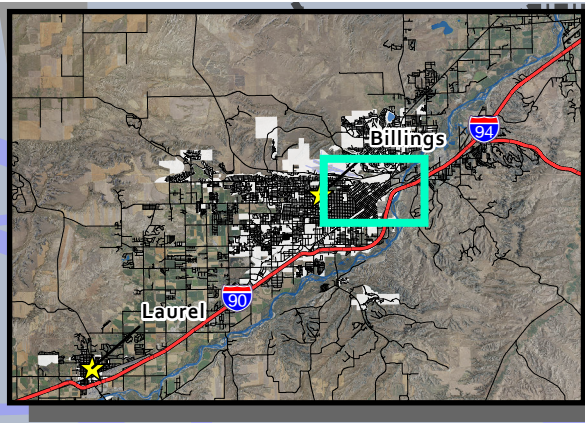
* Counts based on ACS 2023 5 Year Block Group Census Data.
 All values are approximate.
<https://www.census.gov/geographies/mapping-files.html>
<https://data.census.gov/table>



North Park - Median Monthly Owner Costs (With A Mortgage) Per Census Block

Median Monthly Owner Costs (With A Mortgage)		Infrastructure		Other Features	
Lightest Pink	\$1,093 - \$1,406	Green Line	Interstate	Red Line	Street
Light Pink	\$1,407 - \$1,669	Blue Line	Ramp	Red Dashed Line	Proposed
Medium Pink	\$1,670 - \$1,963	Red Line	US or State Route	Blue Dashed Line	Undeveloped
Dark Pink	\$1,964 - \$2,628	Red Dashed Line	Arterial	Blue Dotted Line	Conoco Roads
Lightest Grey	NO DATA AVAILABLE	Black Line	Collector	Blue Dotted Line	Drain
Lightest Grey	NO DATA AVAILABLE	Black Dashed Line	Proposed	Blue Dotted Line	Creek or Slough
Lightest Grey	NO DATA AVAILABLE	Black Dotted Line	Undeveloped	Blue Dotted Line	Canal or Ditch
Lightest Grey	NO DATA AVAILABLE	Black Dotted Line	US or State Route	Blue Dotted Line	Airport
Lightest Grey	NO DATA AVAILABLE	Black Dotted Line	Arterial	Blue Dotted Line	City / County Boundary
Lightest Grey	NO DATA AVAILABLE	Black Dotted Line	Collector	Blue Dotted Line	Drain
Lightest Grey	NO DATA AVAILABLE	Black Dotted Line	Proposed	Blue Dotted Line	Pipe
Lightest Grey	NO DATA AVAILABLE	Black Dotted Line	Undeveloped	Blue Dotted Line	City / County Boundary
Lightest Grey	NO DATA AVAILABLE	Black Dotted Line	US or State Route	Blue Dotted Line	Drain
Lightest Grey	NO DATA AVAILABLE	Black Dotted Line	Arterial	Blue Dotted Line	Pipe
Lightest Grey	NO DATA AVAILABLE	Black Dotted Line	Collector	Blue Dotted Line	City / County Boundary
Lightest Grey	NO DATA AVAILABLE	Black Dotted Line	Proposed	Blue Dotted Line	Drain
Lightest Grey	NO DATA AVAILABLE	Black Dotted Line	Undeveloped	Blue Dotted Line	Pipe
Lightest Grey	NO DATA AVAILABLE	Black Dotted Line	US or State Route	Blue Dotted Line	City / County Boundary
Lightest Grey	NO DATA AVAILABLE	Black Dotted Line	Arterial	Blue Dotted Line	Drain
Lightest Grey	NO DATA AVAILABLE	Black Dotted Line	Collector	Blue Dotted Line	Pipe

*Costs based on ACS 2023 5 Year Block Group Census Data.
 All values are approximate.
<https://www.census.gov/geographies/mapping-files.html>
<https://data.census.gov/table>



*Rent based on ACS 2023 5 Year Block Group Census Data.
 All values are approximate.
<https://www.census.gov/geographies/mapping-files.html>
<https://data.census.gov/table>

North Park - Median Contract Rent Per Census Block

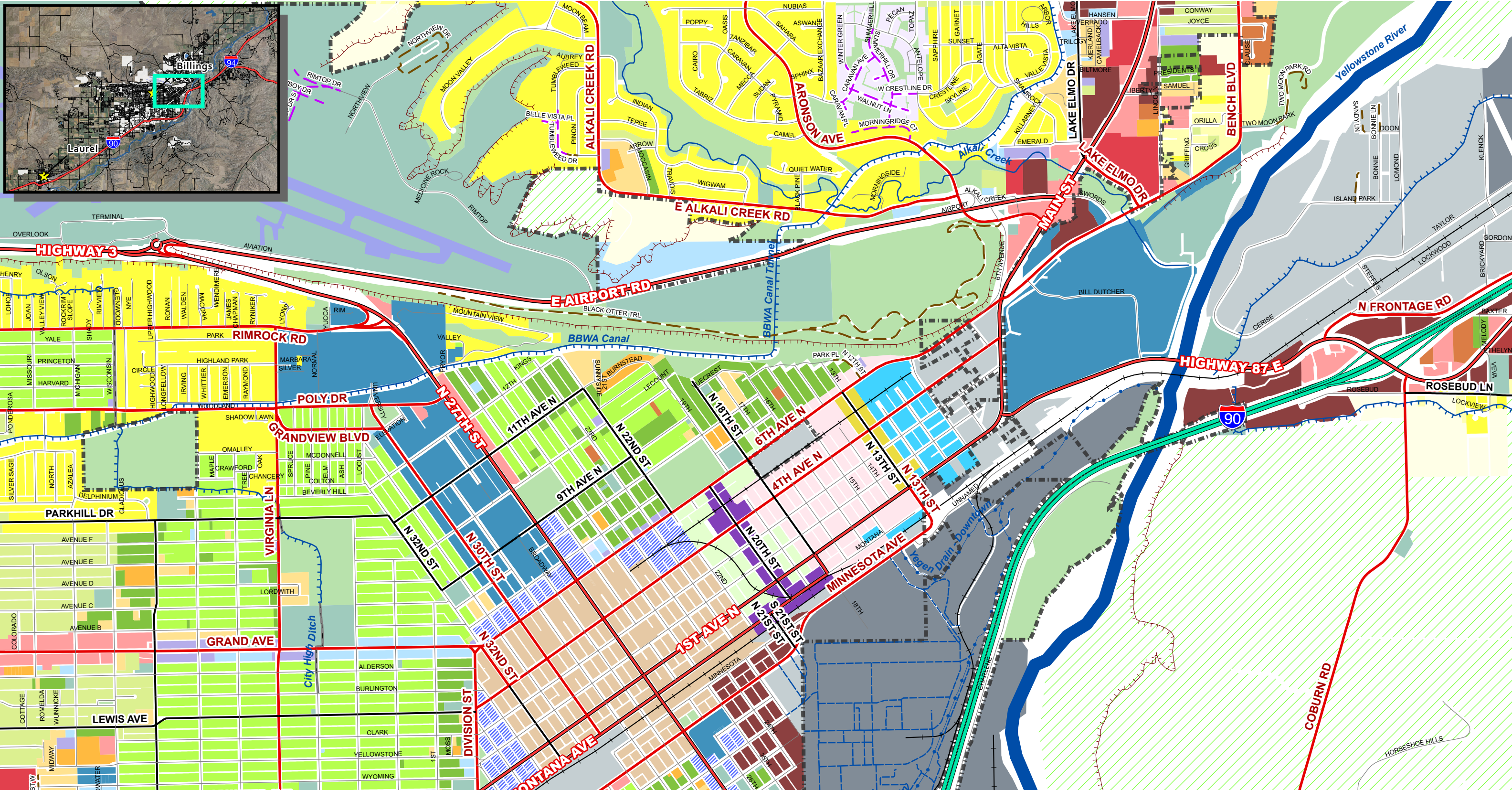
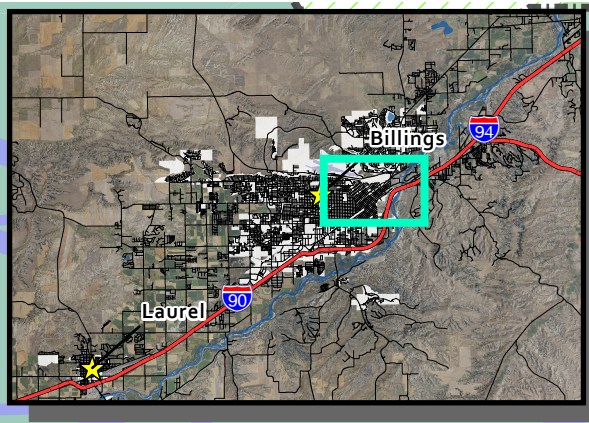
Median Contract Rent	Light Blue: \$490 - \$703	Medium Blue: \$703 - \$960	Dark Blue: \$960 - \$1,299	Lightest Blue: \$1,299 - \$2,250	Dark Blue: \$2,250 - \$4,900	Green: NO DATA AVAILABLE
-----------------------------	---------------------------	----------------------------	----------------------------	----------------------------------	------------------------------	--------------------------

Green Line: Interstate	Black Line: Collector	Blue Line: Conoco Roads	Blue Line: Creek or Slough	Blue Line: Airport
Red Line: US or State Route	Grey Line: Street	Black Line: Railroad	Blue Line: Drain	Black Line: City / County Boundary
Red Line: Arterial	Yellow Line: Undeveloped	Red Line: Rims	Blue Line: Pipe	
		Blue Line: Canal or Ditch	Blue Line: River	

1 inch = 1,500 feet

0 0.25 0.5 0.75 Miles

Billings
 PLANNING & COMMUNITY SERVICES
 Date: 7/9/2025
 User: arendtp
 Map Document: \\pww-w12407\GIS_Files\Maping_Projects\Projects\Community_Development\2025\RFI_1017_Healthy_By_Design\RFI_1017_Healthy_By_Design_Pro\RFI_1017_Healthy_By_Design_Pro.aprx



North Park - City/County Zoning

City - County Zoning		City/County Boundary	
A - Agriculture (10+ acres)*	CMU2 - Corridor Mixed-Use & Commercial Centers	EBURD Central Works	N1 - First Neighborhood
C3 - General Commercial*	CX - Heavy Commercial	EBURD Industrial Sanctuary	N2 - Mid-Century Neighborhood
CBD - Central Business District	EBURD Rail Spur Village Main St	EBURD 13th St Main St	N3 - Suburban Neighborhood
CMU1 - Corridor Mixed-Use	EBURD Rail Spur Village	I1 - Light Industrial	N4 - Large Lot Suburban Neighborhood*
		I2 - Heavy Industrial	NMU - Neighborhood Mixed-Use
			NO - Neighborhood Office
			NX1 - Mixed Residential 1 (1-4 du/structure)
			NX2 - Mixed Residential 2 (2-8 du/structure)
			NX3 - Mixed Residential 3 (>=5 du/structure)
			P1 - Open Space, Parks, Recreation
			P2 - Public - Civic, Institutional
			P3 - Public - Campuses - Medical, Civic, Educational
			PD - Planned Development
			R-RMH Rural - Residential Manufactured Home*
			RMH - Residential Mobile Home
			RR1 - Rural Residential (1 to 2.99 acres)*
			RR3 - Rural Residential (3 to 9.9 acres)*
			Arterial
			Collector
			Street
			Undeveloped
			Conoco Roads
			Railroad
			Rims
			Canal or Ditch
			Creek or Slough
			Drain
			Pipe
			River
			Airport
			US or State Route
			City/County Boundary

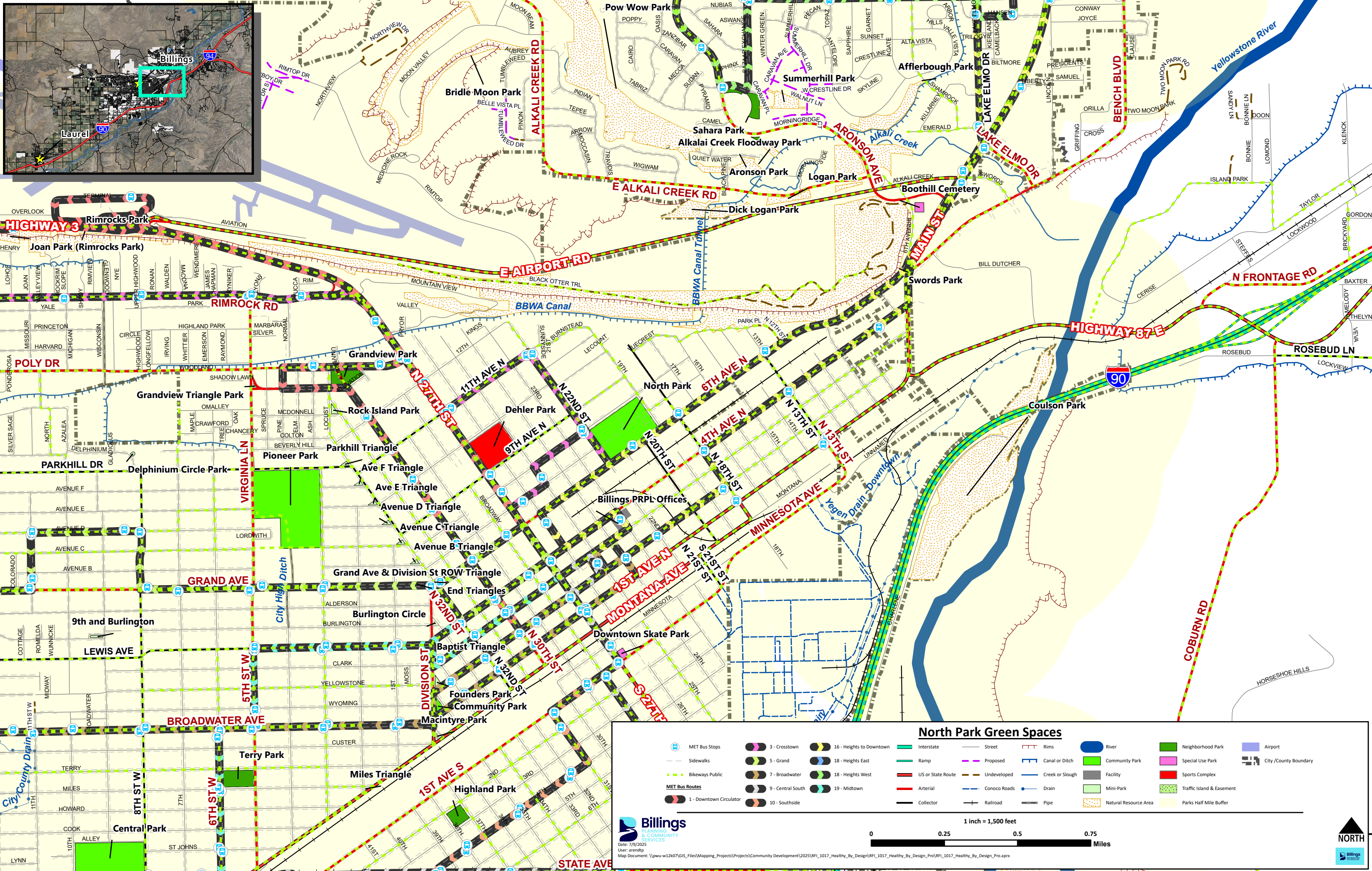
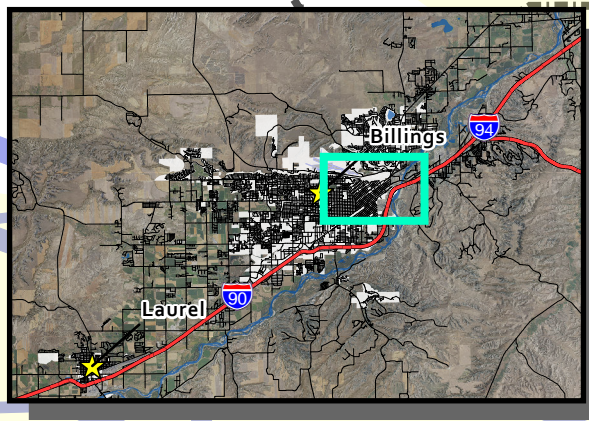
Billings
PLANNING & COMMUNITY SERVICES

Date: 7/9/2025
User: arendtp
Map Document: \\pww-w12k07\GIS_Files\Mapping_Projects\Projects\Community Development\2025\RFI_1017_Healthy_By_Design\RFI_1017_Healthy_By_Design_Pro.aprx

1 inch = 1,500 feet

0 0.25 0.5 0.75 Miles

NORTH



North Park Green Spaces

<ul style="list-style-type: none"> MET Bus Stops Sidewalks Bikeways Public MET Bus Routes 1 - Downtown Circulator 3 - Crosstown 5 - Grand 7 - Broadwater 9 - Central South 10 - Southside 16 - Heights to Downtown 18 - Heights East 18 - Heights West 19 - Midtown 	<ul style="list-style-type: none"> Interstate Ramp US or State Route Arterial Collector Street Proposed Undeveloped Conoco Roads Railroad River Canal or Ditch Creek or Slough Drain Pipe Neighborhood Park Community Park Mini-Park Natural Resource Area Special Use Park Sports Complex Traffic Island & Easement Parks Half Mile Buffer Airport City/County Boundary Facility
-----------------------------------------------------------------------------------------------------------------------------------------------------------------------------------------------------------------------------------------------------------------------------------------------------------------------------------------------------------------------------------------------------------------------	-----------------------------------------------------------------------------------------------------------------------------------------------------------------------------------------------------------------------------------------------------------------------------------------------------------------------------------------------------------------------------------------------------------------------------------------------------------------------------------------------------------------------------------------------------------------------------------------------------------------------------------------------------------------

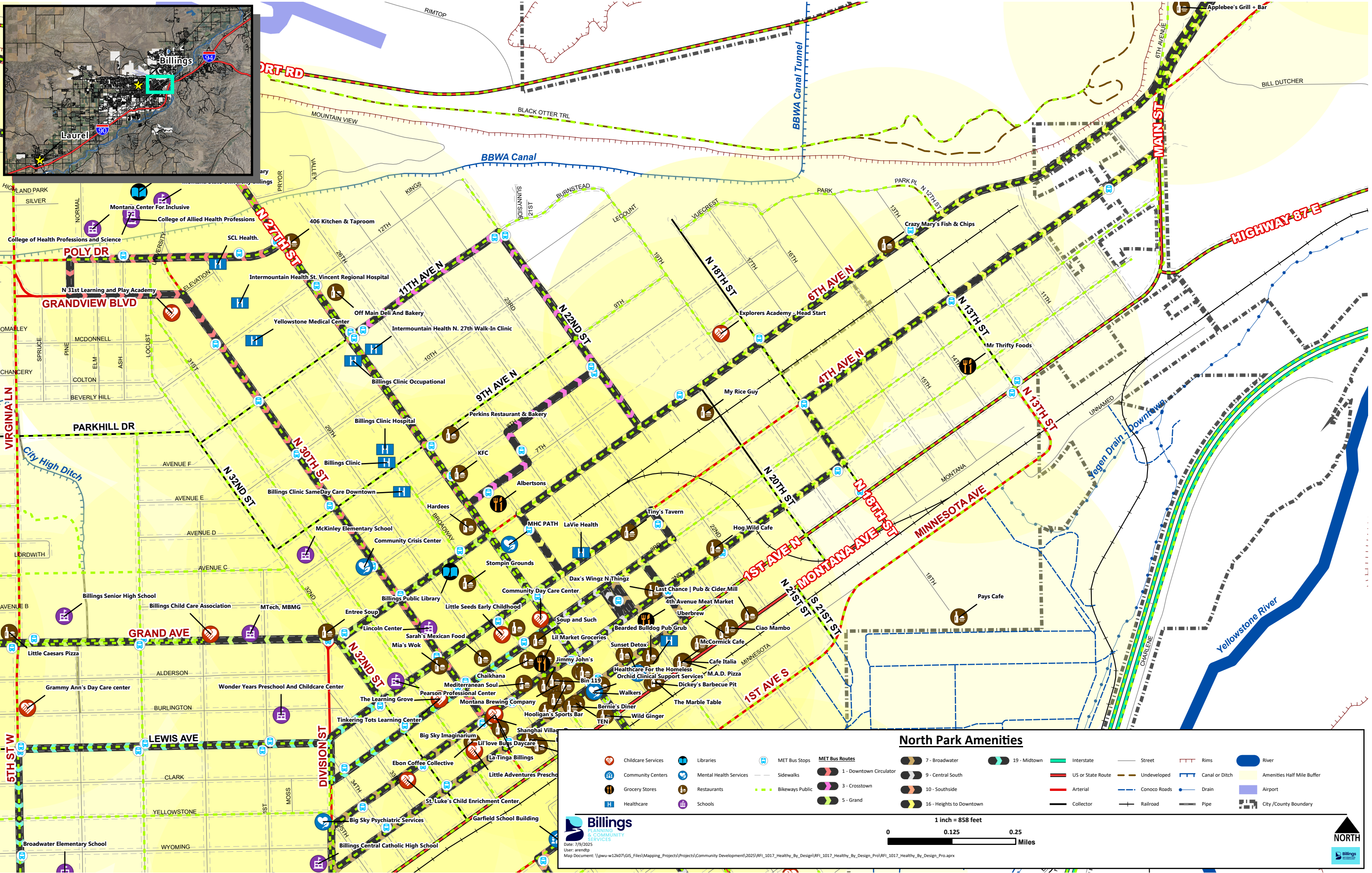
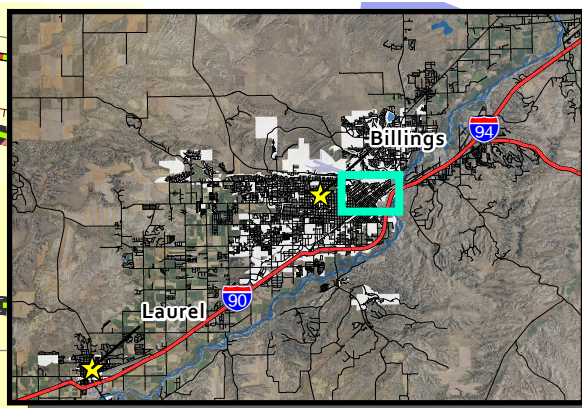
Billings
PLANNING & COMMUNITY SERVICES

Date: 7/9/2025
User: arendtp
Map Document: \\pww-w12k07\GIS_Files\Mapping_Projects\Projects\Community Development\2025\RFL_101_Healthy_By_Design\RFL_101_Healthy_By_Design_Pro\RFL_101_Healthy_By_Design_Pro.aprx

1 inch = 1,500 feet

0 0.25 0.5 0.75 Miles

NORTH



North Park Amenities

MET Bus Routes
 1 - Downtown Circulator
 3 - Crosstown
 5 - Grand
 7 - Broadwater
 9 - Central South
 10 - Southside
 16 - Heights to Downtown
 19 - Midtown

1 inch = 858 feet
 0 0.125 0.25 Miles

Billings
 PLANNING & COMMUNITY SERVICES
 Date: 7/9/2025
 User: arendp
 Map Document: \\pww-w12k07\GIS_Files\Mapping_Projects\Projects\Community Development\2025\RFI_1017_Healthy_By_Design\RFI_1017_Healthy_By_Design_Pro\RFI_1017_Healthy_By_Design_Pro.aprx