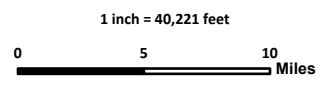
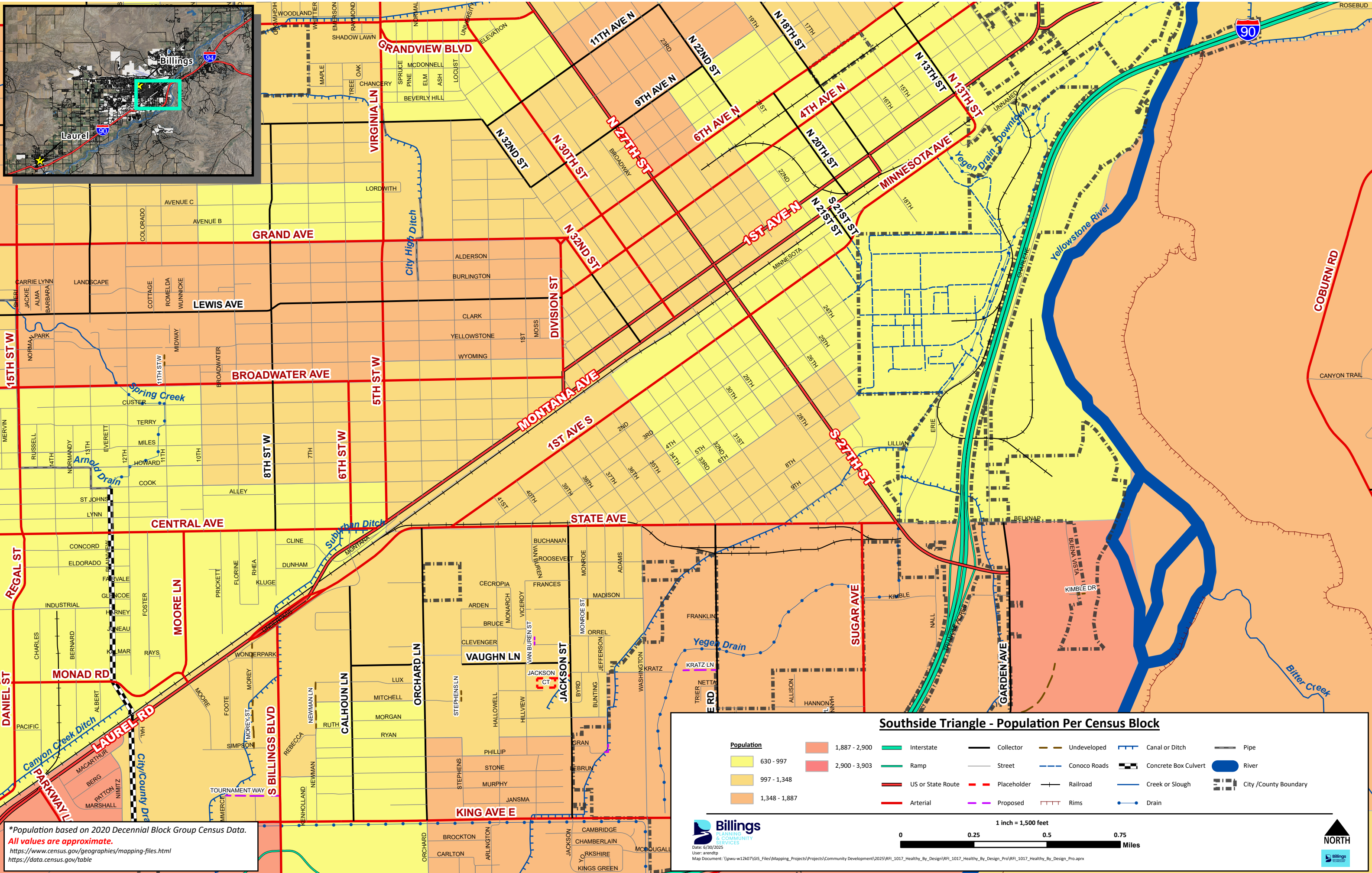
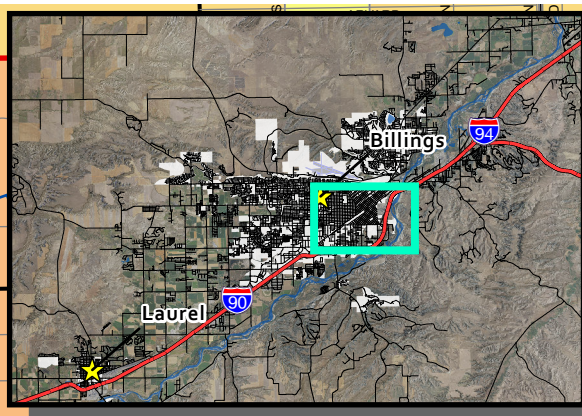


Census Block Group Overview

- Block Groups
- Golden Valley
- Sweet Grass
- City /County Boundary
- Musselshell
- Treasure
- Big Horn
- Rosebud
- Wheatland
- Carbon
- Stillwater
- Yellowstone



Date: 6/26/2025
 User: arendtp
 Map Document: \\pwu-w12k07\GIS\Mapping_Projects\Projects\Community Development\2025\RFI_1017_Healthy_By_Design\RFI_1017_Healthy_By_Design_Pro\RFI_1017_Healthy_By_Design_Pro.d



*Population based on 2020 Decennial Block Group Census Data.
 All values are approximate.
<https://www.census.gov/geographies/mapping-files.html>
<https://data.census.gov/table>

Southside Triangle - Population Per Census Block

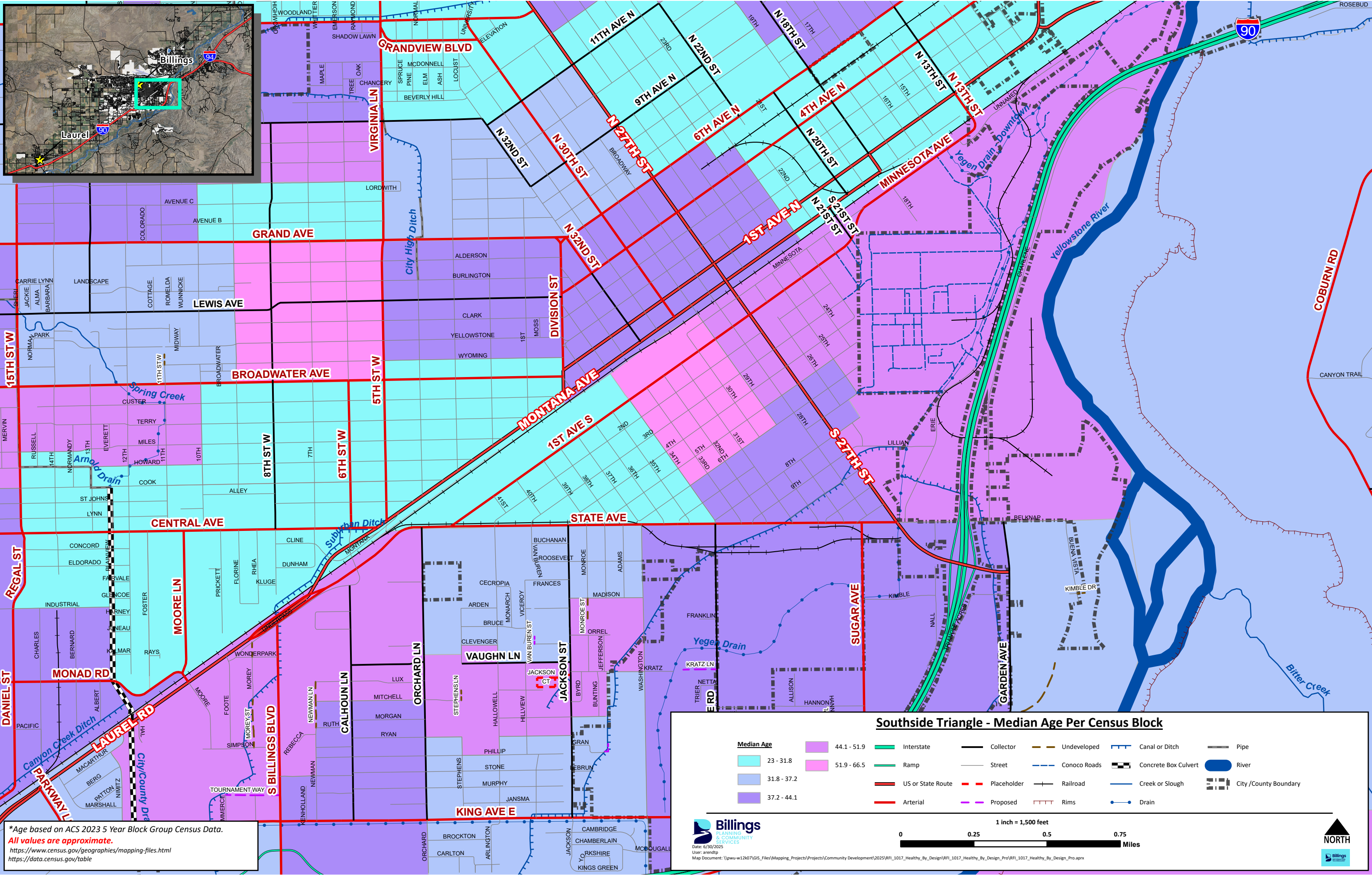
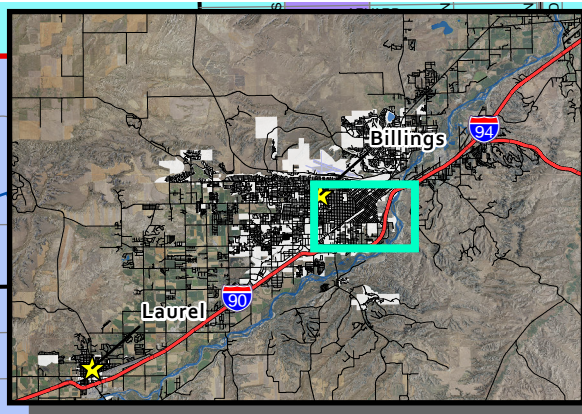
Population	Interstate	Collector	Undeveloped	Canal or Ditch	Pipe
630 - 997	Interstate	Street	Conoco Roads	Creek or Slough	River
997 - 1,348	Ramp	US or State Route	Railroad	Concrete Box Culvert	City/County Boundary
1,348 - 1,887	Arterial	Placeholder	Proposed	Rims	Drain

1 inch = 1,500 feet

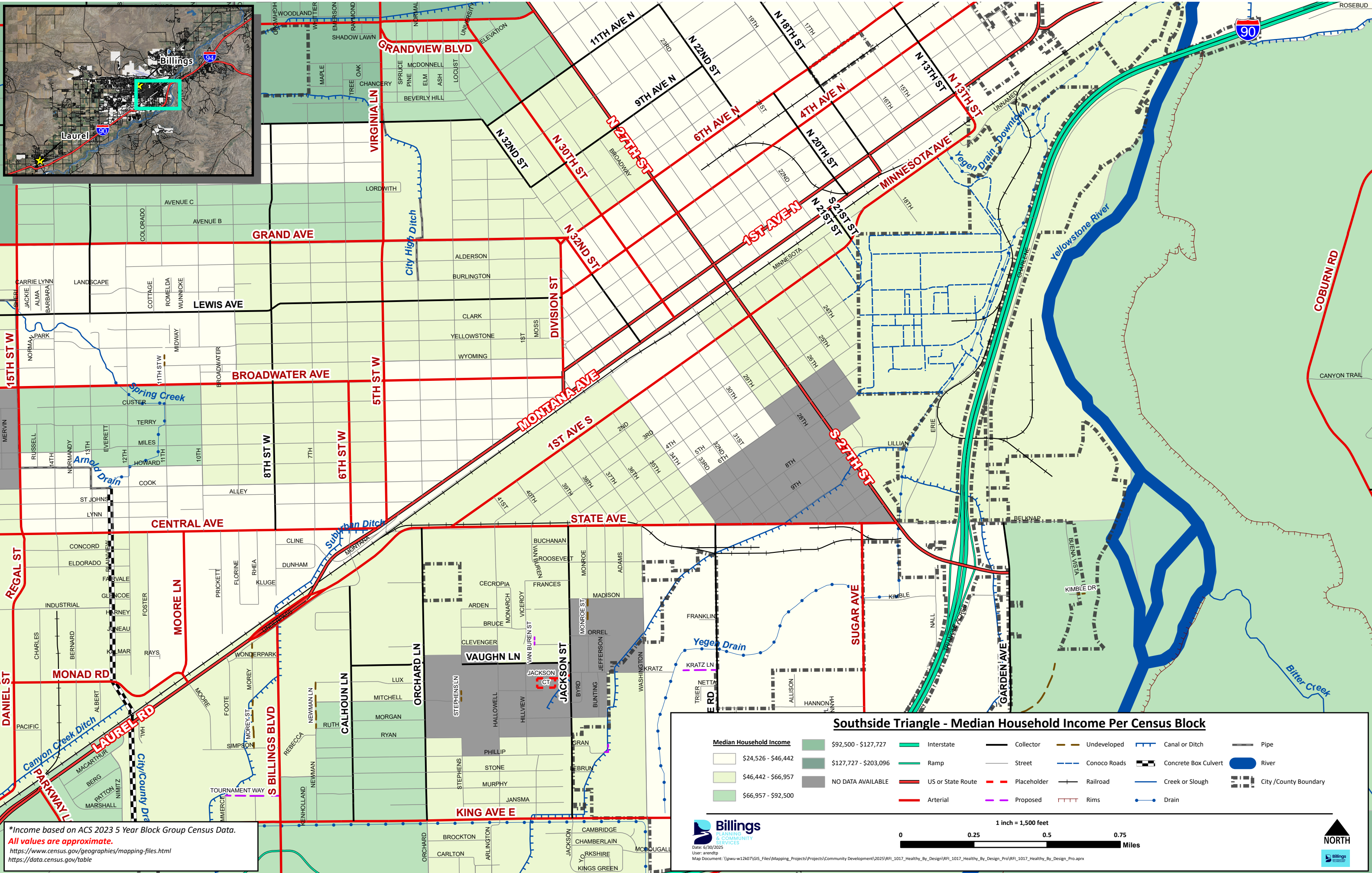
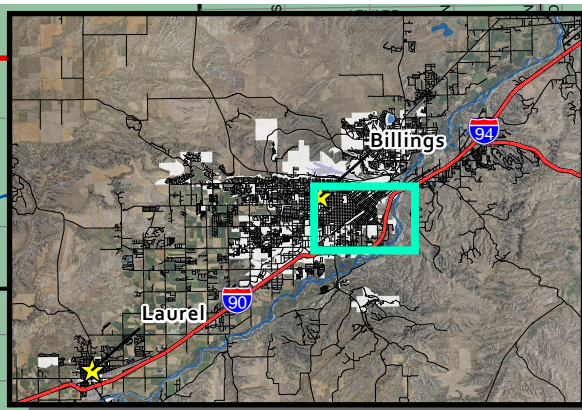
0 0.25 0.5 0.75 Miles

Billings
 PLANNING & COMMUNITY SERVICES
 Date: 6/30/2025
 User: arendt
 Map Document: \\pww-w12407\GIS_Files\Maping_Projects\Projects\Community_Development\2025\RFI_1017_Healthy_By_Design\RFI_1017_Healthy_By_Design_Pro\RFI_1017_Healthy_By_Design_Pro.aprx





*Age based on ACS 2023 5 Year Block Group Census Data.
 All values are approximate.
<https://www.census.gov/geographies/mapping-files.html>
<https://data.census.gov/table>



*Income based on ACS 2023 5 Year Block Group Census Data.
 All values are approximate.
<https://www.census.gov/geographies/mapping-files.html>
<https://data.census.gov/table>

Southside Triangle - Median Household Income Per Census Block

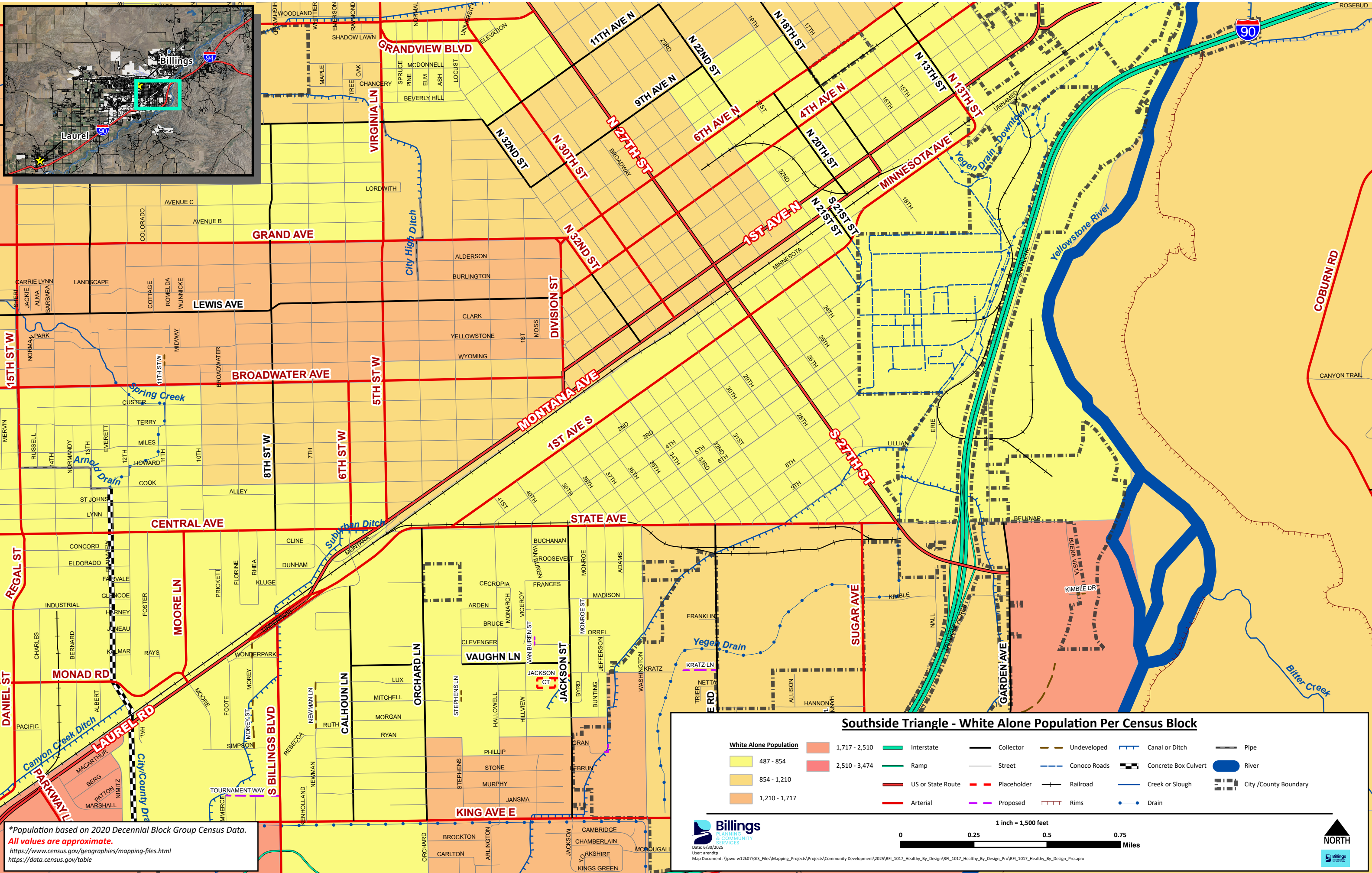
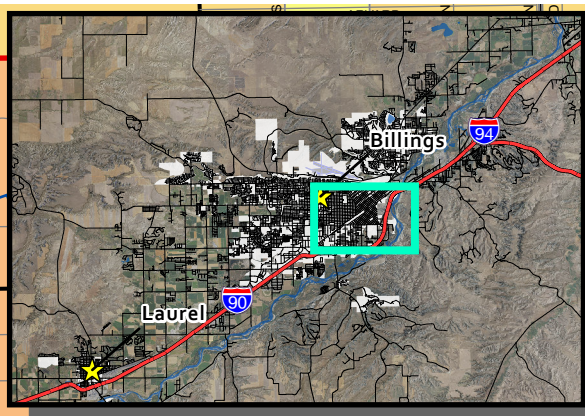
Median Household Income \$24,526 - \$46,442 \$46,442 - \$66,957 \$66,957 - \$92,500 \$92,500 - \$127,727 \$127,727 - \$203,096 NO DATA AVAILABLE	Interstate Ramp US or State Route Arterial Collector Street Placeholder Proposed Undeveloped Conoco Roads Railroad Rims Canal or Ditch Creek or Slough Drain Pipe Concrete Box Culvert River City / County Boundary
---	---

Date: 6/30/2025
 User: arendt
 Map Document: \\pww-w12d7\GIS_Files\Maping_Projects\Projects\Community Development\2025\RFI_1017_Healthy_By_Design\RFI_1017_Healthy_By_Design_Pro\RFI_1017_Healthy_By_Design_Pro.aprx

1 inch = 1,500 feet

0 0.25 0.5 0.75 Miles

NORTH



*Population based on 2020 Decennial Block Group Census Data.
 All values are approximate.
<https://www.census.gov/geographies/mapping-files.html>
<https://data.census.gov/table>

Southside Triangle - White Alone Population Per Census Block

White Alone Population	1,717 - 2,510	Interstate	Collector	Undeveloped	Canal or Ditch	Pipe
487 - 854	2,510 - 3,474	Ramp	Street	Conoco Roads	Creek or Slough	River
854 - 1,210		US or State Route	Placeholder	Railroad	Concrete Box Culvert	City/County Boundary
1,210 - 1,717		Arterial	Proposed	Rims	Drain	

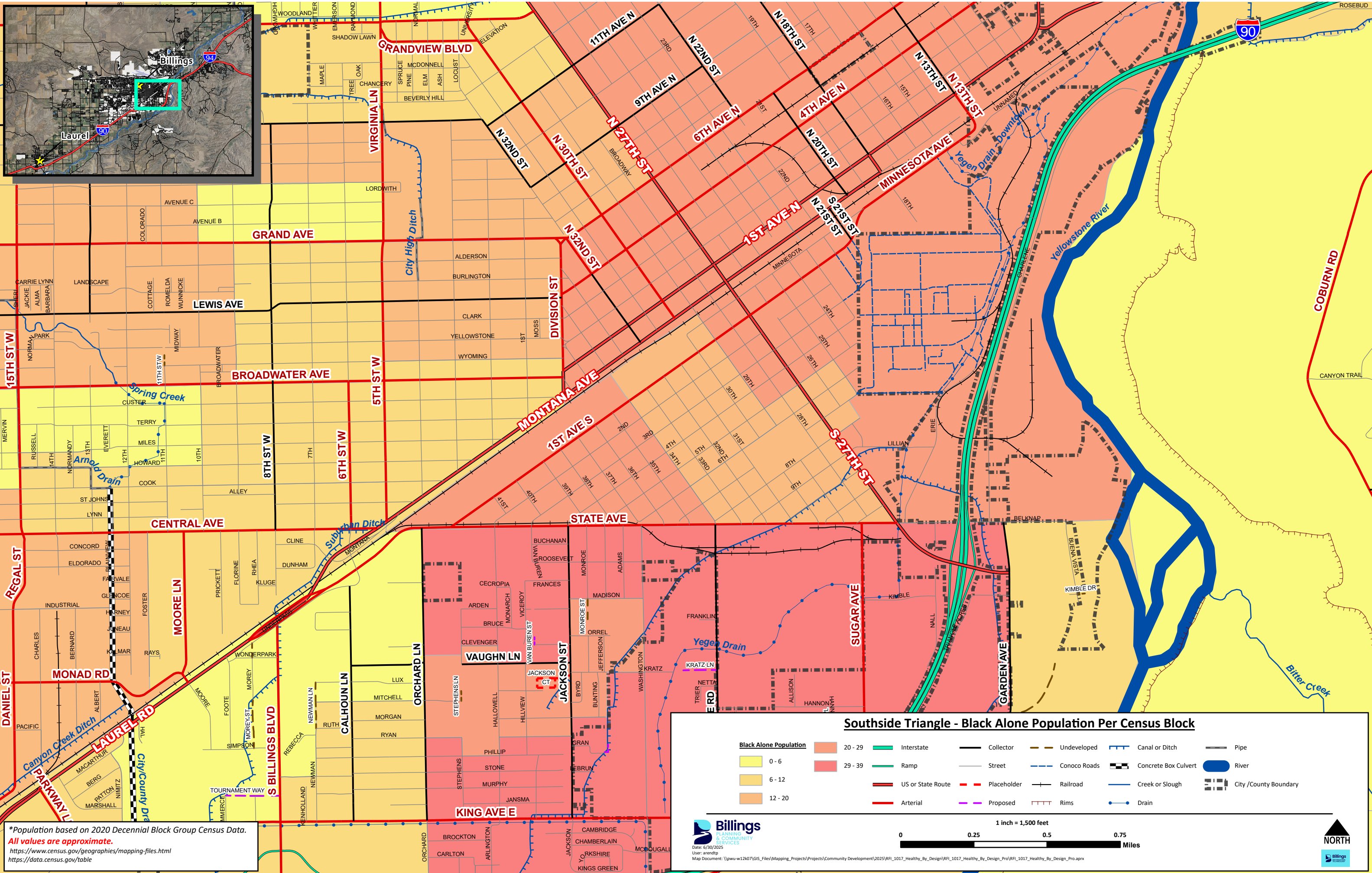
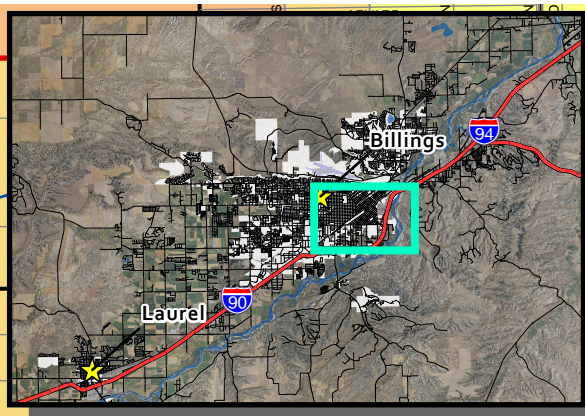
1 inch = 1,500 feet

0 0.25 0.5 0.75
Miles

NORTH

Billings
PLANNING & COMMUNITY SERVICES

Date: 6/30/2025
 User: arendt
 Map Document: \\pww-w12d7\GIS_Files\Maping_Projects\Projects\Community Development\2025\RFI_1017_Healthy_By_Design\RFI_1017_Healthy_By_Design_Pro\RFI_1017_Healthy_By_Design_Pro.aprx



*Population based on 2020 Decennial Block Group Census Data.
 All values are approximate.
<https://www.census.gov/geographies/mapping-files.html>
<https://data.census.gov/table>

Southside Triangle - Black Alone Population Per Census Block

<p>Black Alone Population</p> <ul style="list-style-type: none"> 0 - 6 6 - 12 12 - 20 20 - 29 29 - 39 	<ul style="list-style-type: none"> Interstate Ramp US or State Route Placeholder Arterial Collector Street Conoco Roads Railroad Proposed Undeveloped Concrete Box Culvert Rims Canal or Ditch Creek or Slough Drain Pipe River City / County Boundary
--	---

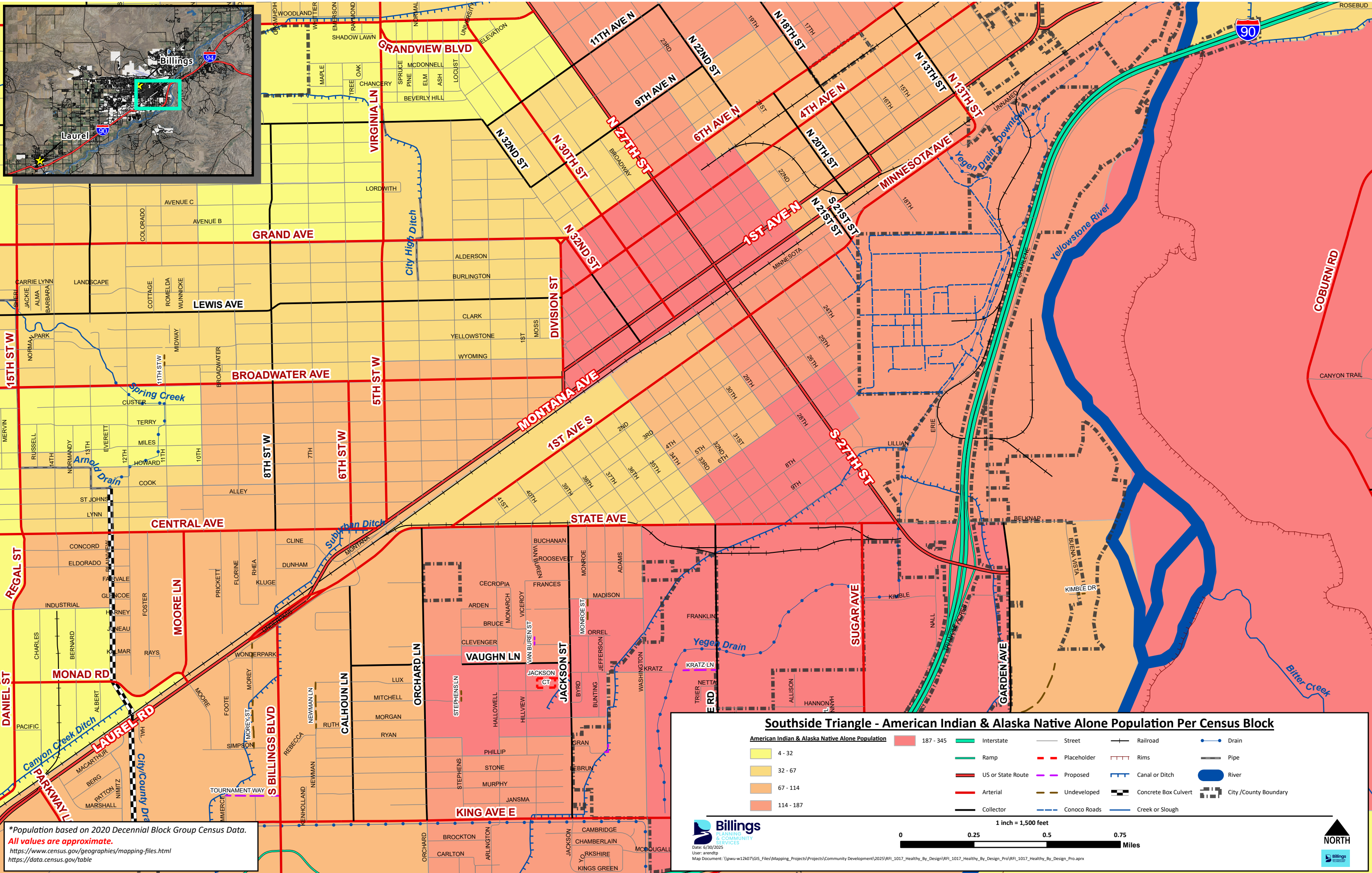
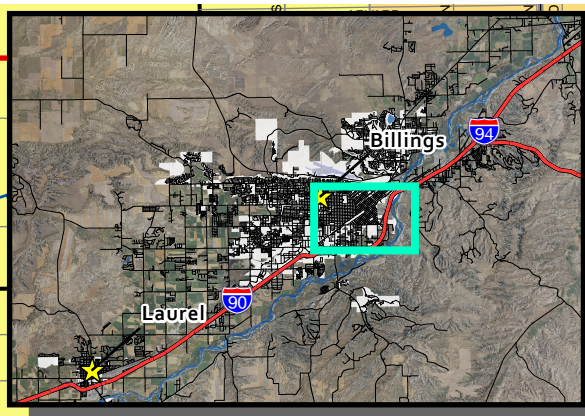
Billings
PLANNING & COMMUNITY SERVICES

Date: 6/30/2025
User: arendt
Map Document: \\pww-w12407\GIS\Maping_Projects\Projects\Community Development\2025\RFI_101_Healthy_By_Design\RFI_101_Healthy_By_Design_Pro\RFI_101_Healthy_By_Design_Pro.aprx

1 inch = 1,500 feet

0 0.25 0.5 0.75 Miles

NORTH



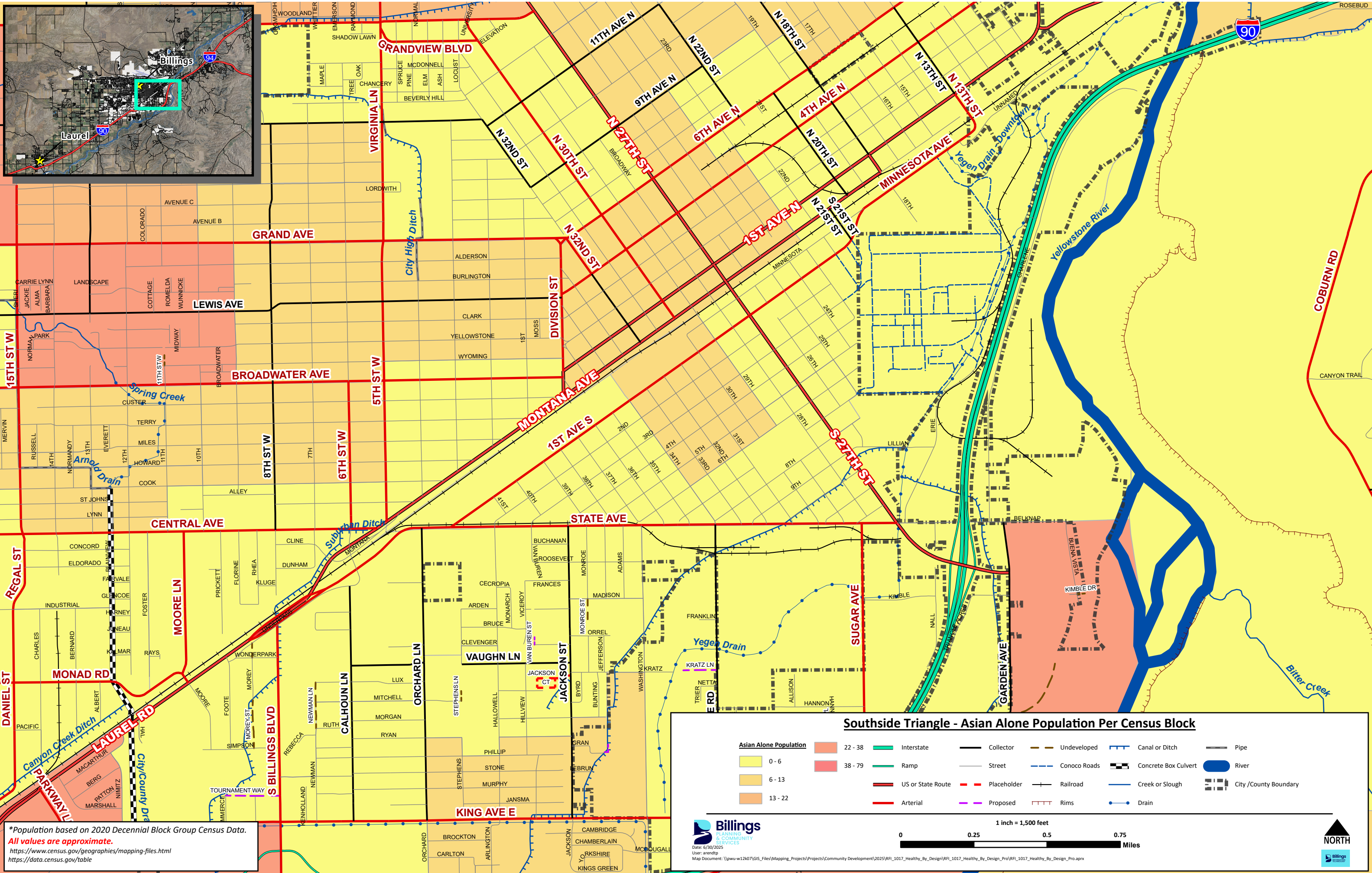
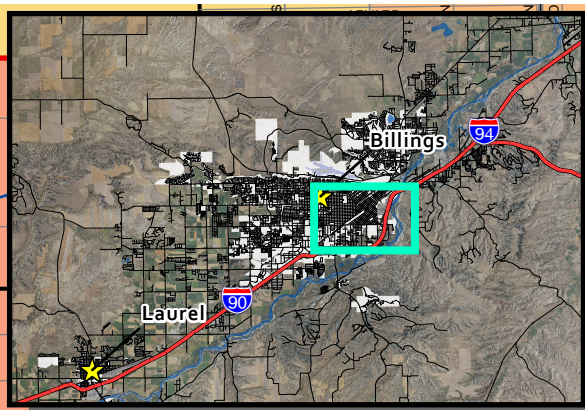
Southside Triangle - American Indian & Alaska Native Alone Population Per Census Block

American Indian & Alaska Native Alone Population		Infrastructure	
4 - 32	187 - 345	Interstate	Street
32 - 67	346 - 500	Ramp	Placeholder
67 - 114	501 - 655	US or State Route	Proposed
114 - 187	656 - 810	Arterial	Undeveloped
	811 - 965	Collector	Conoco Roads
	966 - 1120		Canal or Ditch
	1121 - 1275		River
	1276 - 1430		Creek or Slough
	1431 - 1585		Railroad
	1586 - 1740		Rims
	1741 - 1895		Pipe
	1896 - 2050		Concrete Box Culvert
	2051 - 2205		City/County Boundary

*Population based on 2020 Decennial Block Group Census Data.
 All values are approximate.
<https://www.census.gov/geographies/mapping-files.html>
<https://data.census.gov/table>

1 inch = 1,500 feet
 0 0.25 0.5 0.75 Miles
 Date: 6/30/2025
 User: arendtp
 Map Document: \\pww-w12407\GIS_Files\Maping_Projects\Projects\Community_Development\2025\RFI_101_Healthy_By_Design\RFI_101_Healthy_By_Design_Pro\RFI_101_Healthy_By_Design_Pro.aprx





*Population based on 2020 Decennial Block Group Census Data.
 All values are approximate.
<https://www.census.gov/geographies/mapping-files.html>
<https://data.census.gov/table>

Southside Triangle - Asian Alone Population Per Census Block

<p>Asian Alone Population</p> <ul style="list-style-type: none"> 0 - 6 6 - 13 13 - 22 22 - 38 38 - 79 	<ul style="list-style-type: none"> Interstate Ramp US or State Route Arterial Placeholder Proposed Collector Street Placeholder Railroad Rims Undeveloped Conoco Roads Railroad Concrete Box Culvert City / County Boundary Pipe River Creek or Slough Drain
--	---

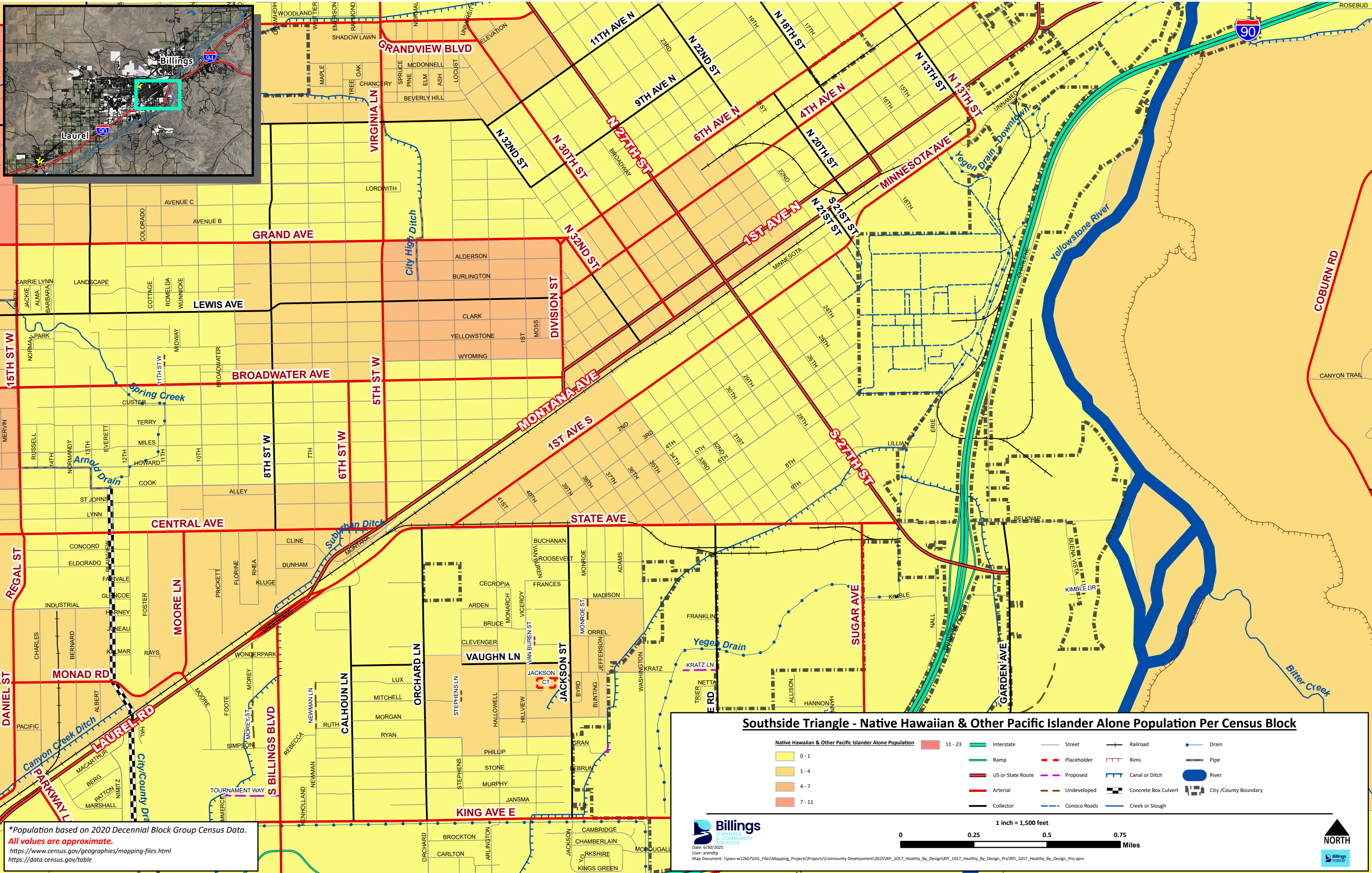
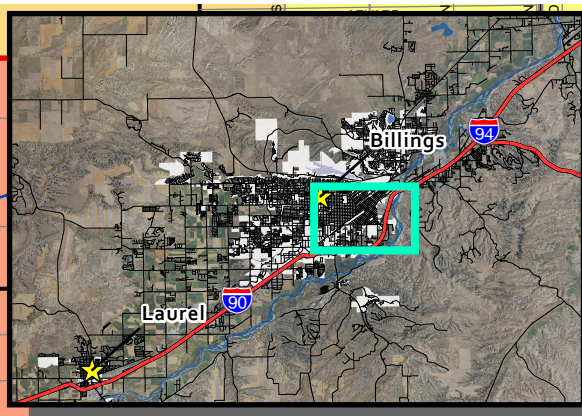
Billings
PLANNING & COMMUNITY SERVICES

Date: 6/30/2025
 User: arendt
 Map Document: \\pww-w12d7\GIS_Files\Maping_Projects\Projects\Community Development\2025\RFI_1017_Healthy_By_Design\RFI_1017_Healthy_By_Design_Pro\RFI_1017_Healthy_By_Design_Pro.aprx

1 inch = 1,500 feet

0 0.25 0.5 0.75 Miles

NORTH



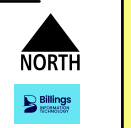
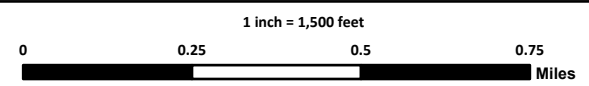
Southside Triangle - Native Hawaiian & Other Pacific Islander Alone Population Per Census Block

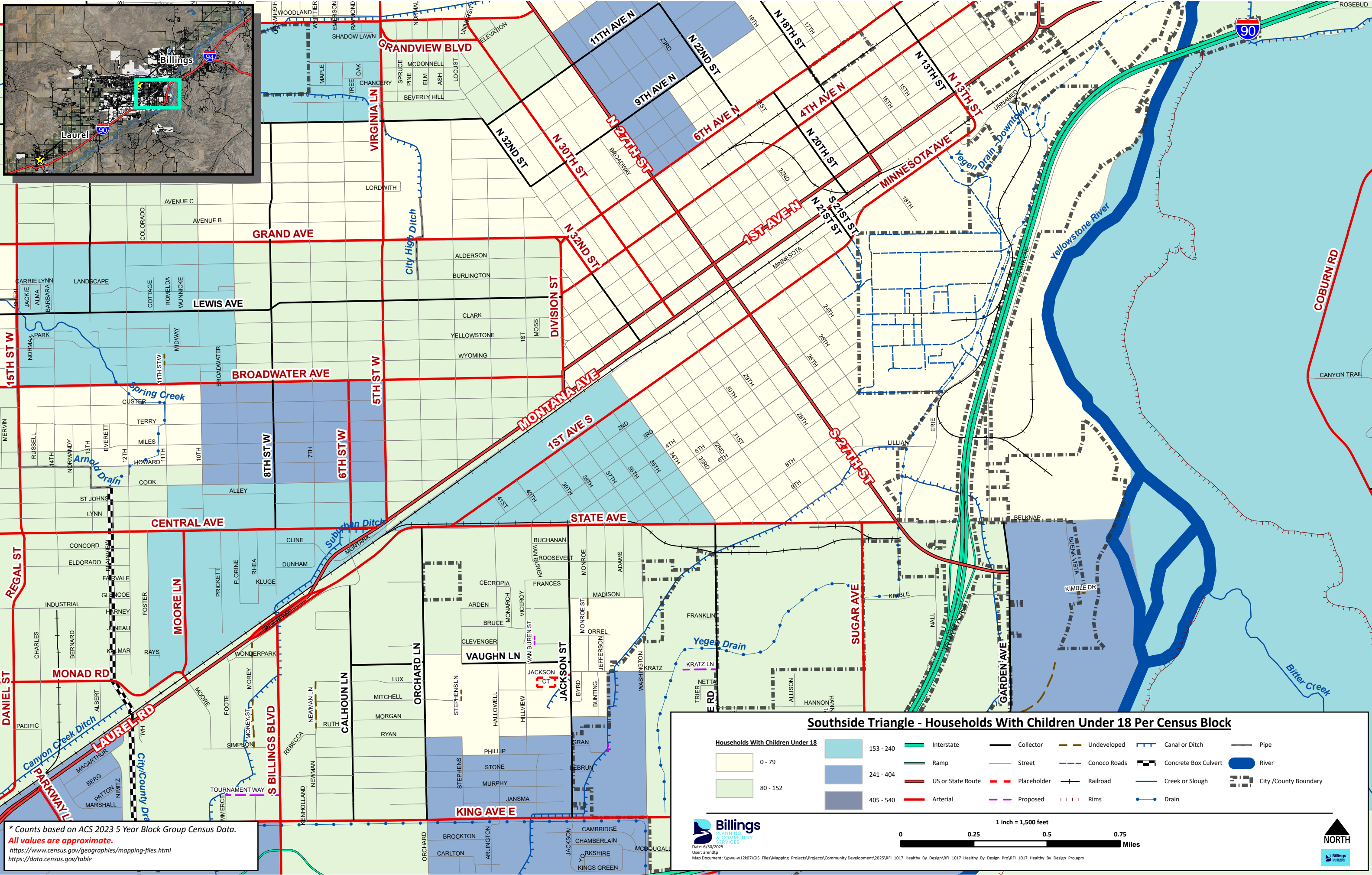
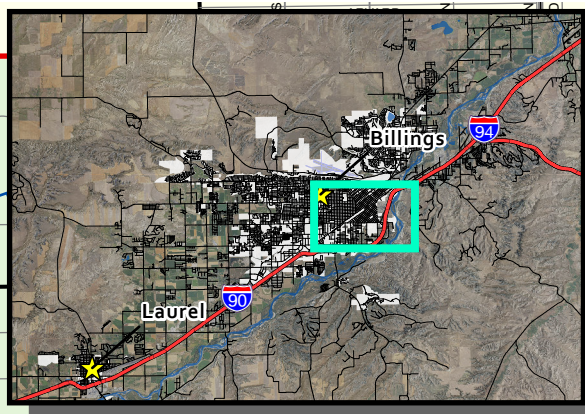
Native Hawaiian & Other Pacific Islander Alone Population		Interstate	Street	Railroad	Drain
0 - 1	11 - 23	Ramp	Placeholder	Rims	Pipe
1 - 4	US or State Route	Proposed	Undeveloped	Concrete Box Culvert	River
4 - 7	Arterial	Collector	Conoco Roads	Creek or Slough	
7 - 11					

*Population based on 2020 Decennial Block Group Census Data.
 All values are approximate.
<https://www.census.gov/geographies/mapping-files.html>
<https://data.census.gov/table>



Date: 6/30/2025
 User: arendis
 Map Document: \\pww-w12407\GIS_Files\Maping_Projects\Projects\Community Development\2025\RFI_1017_Healthy_By_Design\RFI_1017_Healthy_By_Design_Pro\RFI_1017_Healthy_By_Design_Pro.aprx





* Counts based on ACS 2023 5 Year Block Group Census Data.
 All values are approximate.
<https://www.census.gov/geographies/mapping-files.html>
<https://data.census.gov/table>

Southside Triangle - Households With Children Under 18 Per Census Block

<p>Households With Children Under 18</p> <ul style="list-style-type: none"> 0 - 79 80 - 152 153 - 240 241 - 404 405 - 540 	<ul style="list-style-type: none"> Interstate Ramp US or State Route Arterial Collector Street Placeholder Proposed Undeveloped Conoco Roads Railroad Rims Canal or Ditch Concrete Box Culvert Creek or Slough Drain Pipe River City / County Boundary
---	---

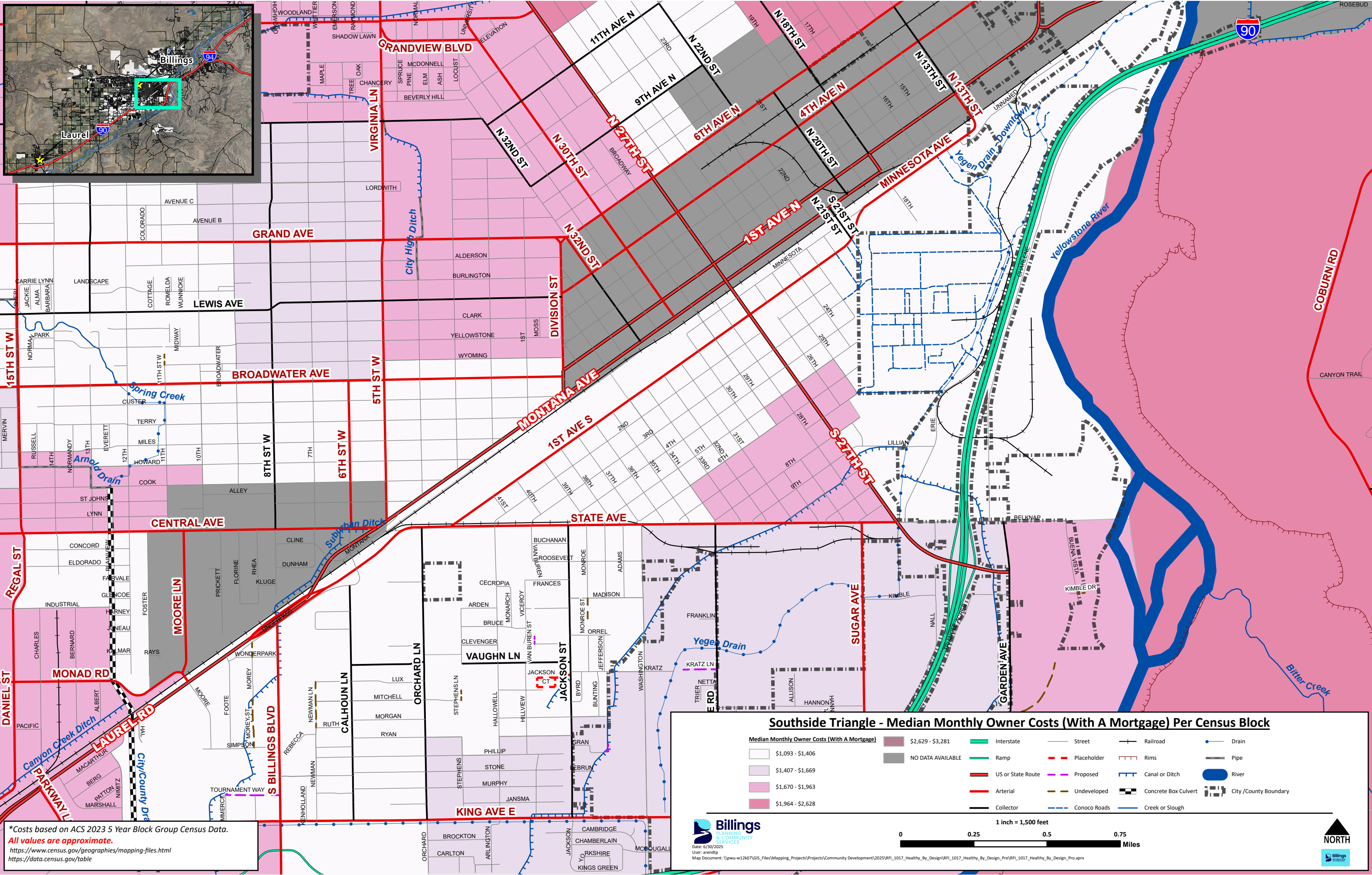
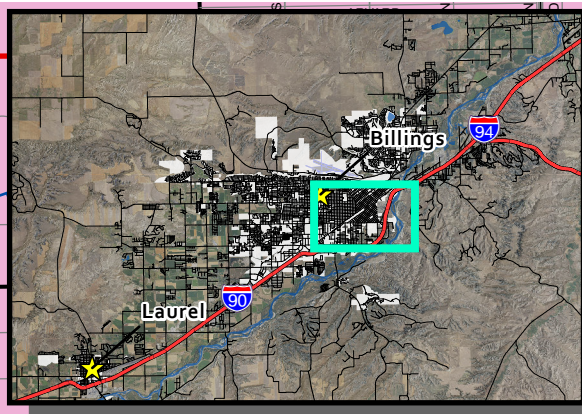
Billings
PLANNING & COMMUNITY SERVICES

Date: 6/30/2025
User: arendtp
Map Document: \\pww-w12d7\GIS\Maping_Projects\Projects\Community Development\2025\RFI_1017_Healthy_By_Design\RFI_1017_Healthy_By_Design_Pro\RFI_1017_Healthy_By_Design_Pro.aprx

1 inch = 1,500 feet

0 0.25 0.5 0.75 Miles

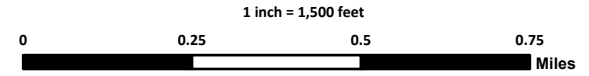
NORTH

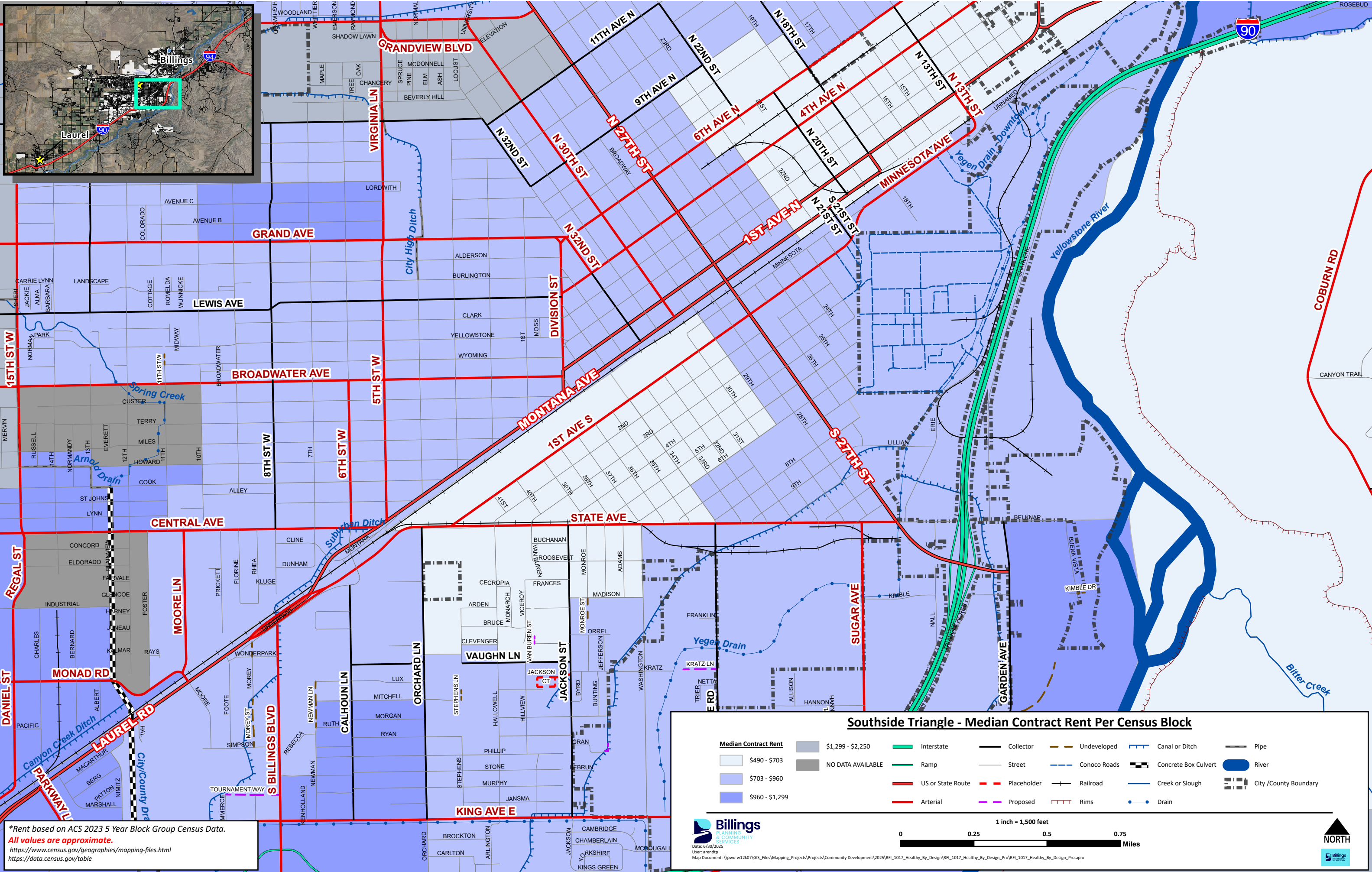
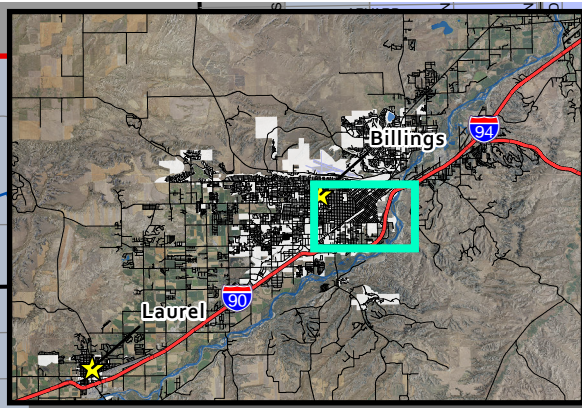


Southside Triangle - Median Monthly Owner Costs (With A Mortgage) Per Census Block

Median Monthly Owner Costs (With A Mortgage)		Interstate		Street		Railroad		Drain	
\$1,093 - \$1,406	NO DATA AVAILABLE	Interstate	Ramp	Placeholder	Proposed	Rims	Canal or Ditch	Pipe	River
\$1,407 - \$1,669		US or State Route	Arterial	Undeveloped	Conoco Roads	Concrete Box Culvert	City/County Boundary		
\$1,670 - \$1,963		Collector							Creek or Slough
\$1,964 - \$2,628									

*Costs based on ACS 2023 5 Year Block Group Census Data.
 All values are approximate.
<https://www.census.gov/geographies/mapping-files.html>
<https://data.census.gov/table>





*Rent based on ACS 2023 5 Year Block Group Census Data.
 All values are approximate.
<https://www.census.gov/geographies/mapping-files.html>
<https://data.census.gov/table>

Southside Triangle - Median Contract Rent Per Census Block

Median Contract Rent	■ \$1,299 - \$2,250	■ Interstate	— Collector	■ Undeveloped	— Canal or Ditch	— Pipe
■ \$490 - \$703	■ NO DATA AVAILABLE	■ Ramp	— Street	— Conoco Roads	— Concrete Box Culvert	— River
■ \$703 - \$960		■ US or State Route	— Placeholder	— Railroad	— Creek or Slough	— City / County Boundary
■ \$960 - \$1,299		■ Arterial	— Proposed	— Rims	— Drain	

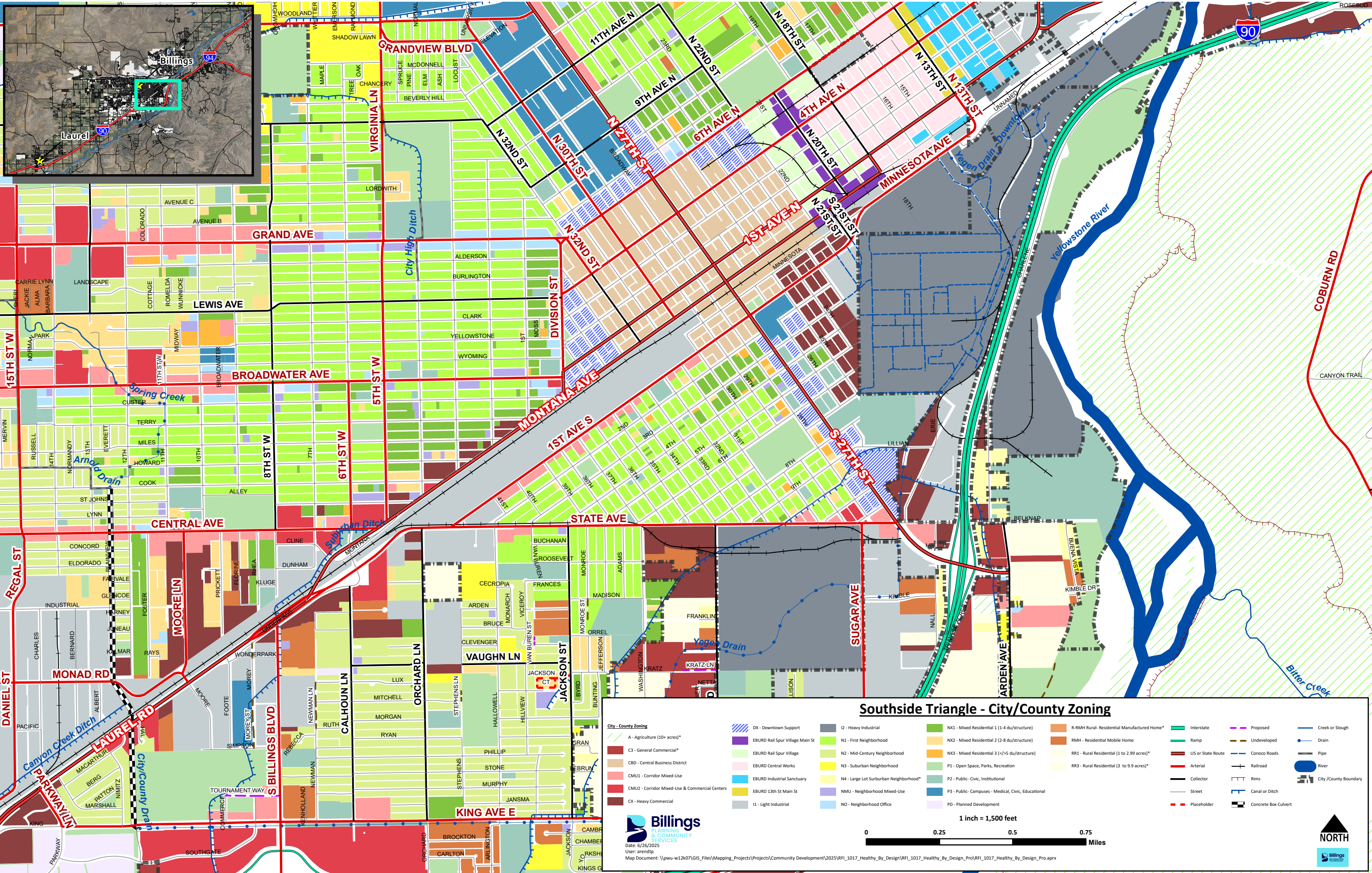
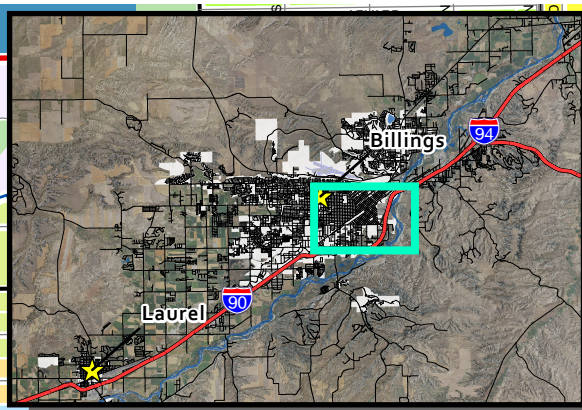
1 inch = 1,500 feet

0 0.25 0.5 0.75
Miles

NORTH

Billings
 PLANNING & COMMUNITY SERVICES

Date: 6/30/2025
 User: arendtp
 Map Document: \\pww-w12k07\GIS_Files\Maping_Projects\Projects\Community_Development\2025\RFI_1017_Healthy_By_Design\RFI_1017_Healthy_By_Design_Pro\RFI_1017_Healthy_By_Design_Pro.aprx



Southside Triangle - City/County Zoning

<p>City - County Zoning</p> <ul style="list-style-type: none"> A - Agriculture (10+ acres)* C3 - General Commercial* CBD - Central Business District CMU1 - Corridor Mixed-Use CMU2 - Corridor Mixed-Use & Commercial Centers CX - Heavy Commercial 	<ul style="list-style-type: none"> DX - Downtown Support EBURD Rail Spur Village Main St EBURD Rail Spur Village EBURD Central Works EBURD Industrial Sanctuary EBURD 13th St Main St I1 - Light Industrial 	<ul style="list-style-type: none"> I2 - Heavy Industrial N1 - First Neighborhood N2 - Mid-City Neighborhood N3 - Suburban Neighborhood N4 - Large Lot Suburban Neighborhood* NMU - Neighborhood Mixed-Use NO - Neighborhood Office 	<ul style="list-style-type: none"> NX1 - Mixed Residential 1 (1-4 du/structure) NX2 - Mixed Residential 2 (2-8 du/structure) NX3 - Mixed Residential 3 (>5 du/structure) P1 - Open Space, Parks, Recreation P2 - Public - Civic, Institutional P3 - Public - Campuses - Medical, Civic, Educational PD - Planned Development R-RMH Rural - Residential Manufactured Home* RMH - Residential Mobile Home RR1 - Rural Residential (1 to 2.99 acres)* RR3 - Rural Residential (3 to 9.99 acres)* 	<ul style="list-style-type: none"> Interstate Ramp US or State Route Arterial Collector Street Placeholder Proposed Undeveloped Conoco Roads Railroad Rims Canal or Ditch Concrete Box Culvert 	<ul style="list-style-type: none"> Creek or Slough Drain Pipe River City/County Boundary
--	--	---	---	--	---

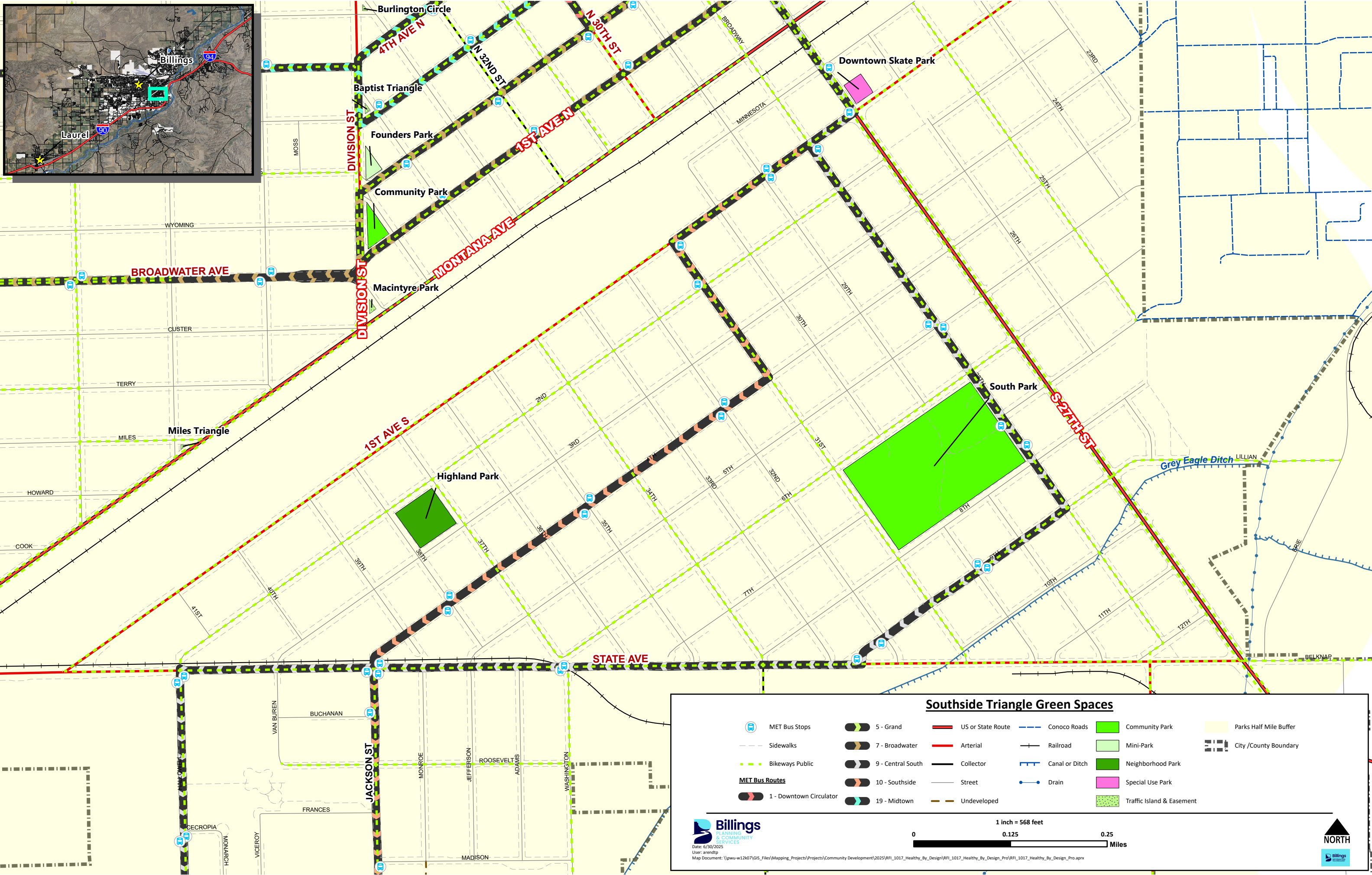
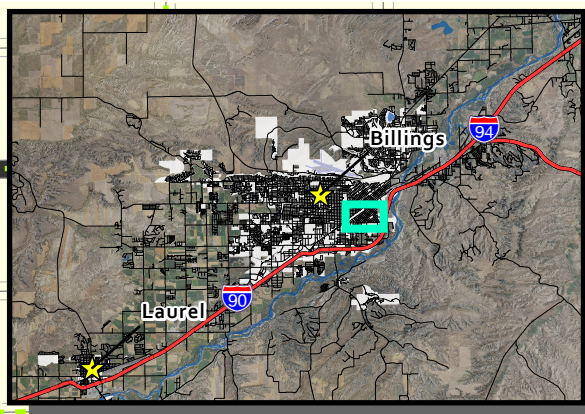
Billings
PLANNING & COMMUNITY SERVICES

Date: 6/26/2025
User: arendp
Map Document: \\pww-w12k07\GIS_Files\Mapping_Projects\Projects\Community Development\2025\RFI_1017_Healthy_By_Design\RFI_1017_Healthy_By_Design_Pro\RFI_1017_Healthy_By_Design_Pro.aprx

1 inch = 1,500 feet

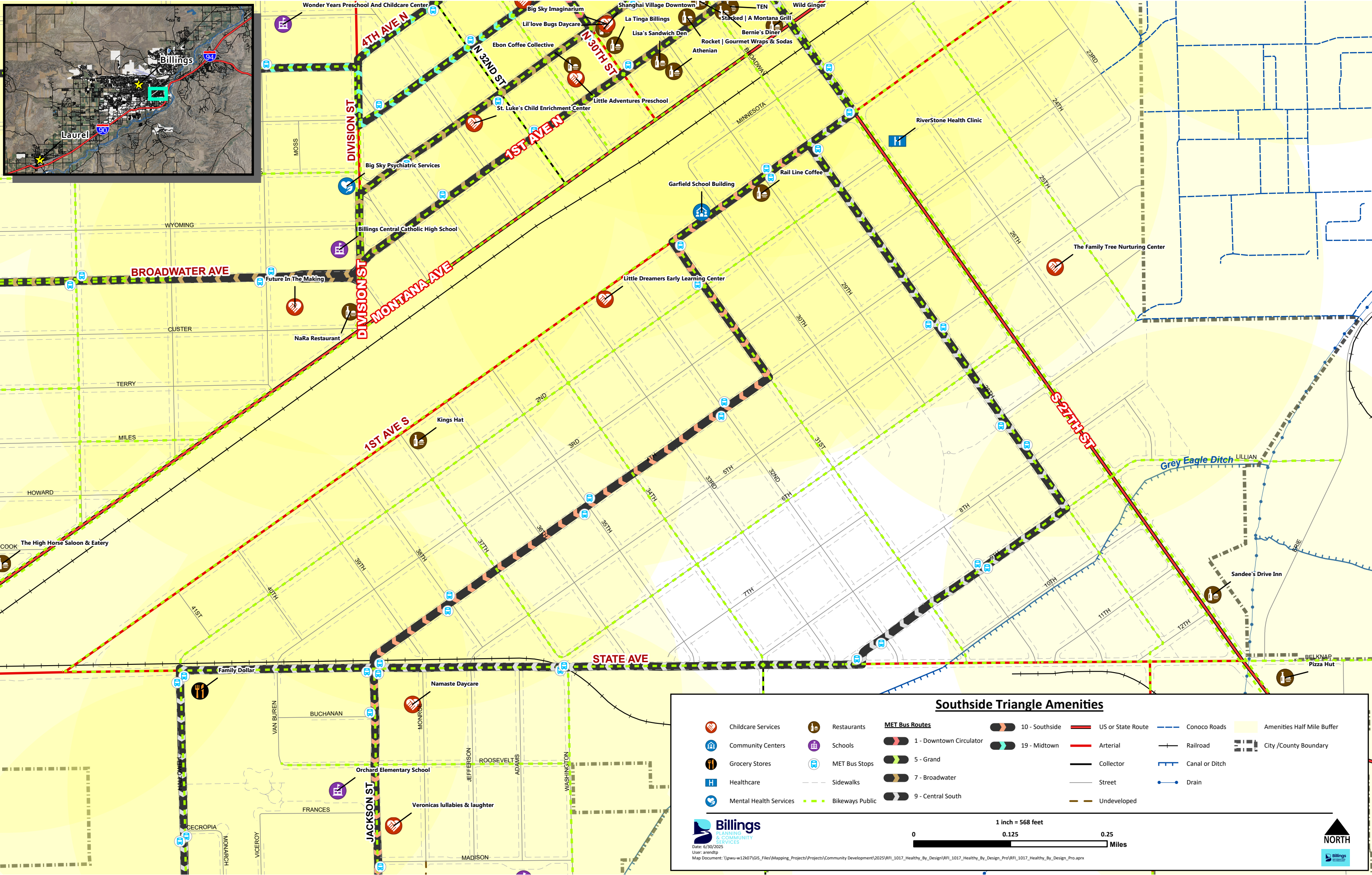
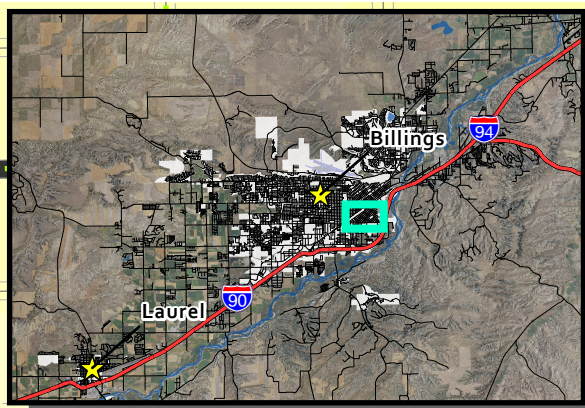
Miles

NORTH



Southside Triangle Green Spaces

- | | | | | | |
|-------------------------|-------------------|-------------------|----------------|---------------------------|------------------------|
| MET Bus Stops | 5 - Grand | US or State Route | Conoco Roads | Community Park | Parks Half Mile Buffer |
| Sidewalks | 7 - Broadwater | Arterial | Railroad | Mini-Park | City /County Boundary |
| Bikeways Public | 9 - Central South | Collector | Canal or Ditch | Neighborhood Park | Special Use Park |
| MET Bus Routes | 10 - Southside | Street | Drain | Traffic Island & Easement | |
| 1 - Downtown Circulator | 19 - Midtown | Undeveloped | | | |



Southside Triangle Amenities

- | | | | | | | |
|------------------------|-----------------|-------------------------|----------------|-------------------|----------------|----------------------------|
| Childcare Services | Restaurants | MET Bus Routes | 10 - Southside | US or State Route | Conoco Roads | Amenities Half Mile Buffer |
| Community Centers | Schools | 1 - Downtown Circulator | 19 - Midtown | Arterial | Railroad | City /County Boundary |
| Grocery Stores | MET Bus Stops | 5 - Grand | 7 - Broadwater | Collector | Canal or Ditch | |
| Healthcare | Sidewalks | 9 - Central South | Undeveloped | Street | Drain | |
| Mental Health Services | Bikeways Public | | | | | |